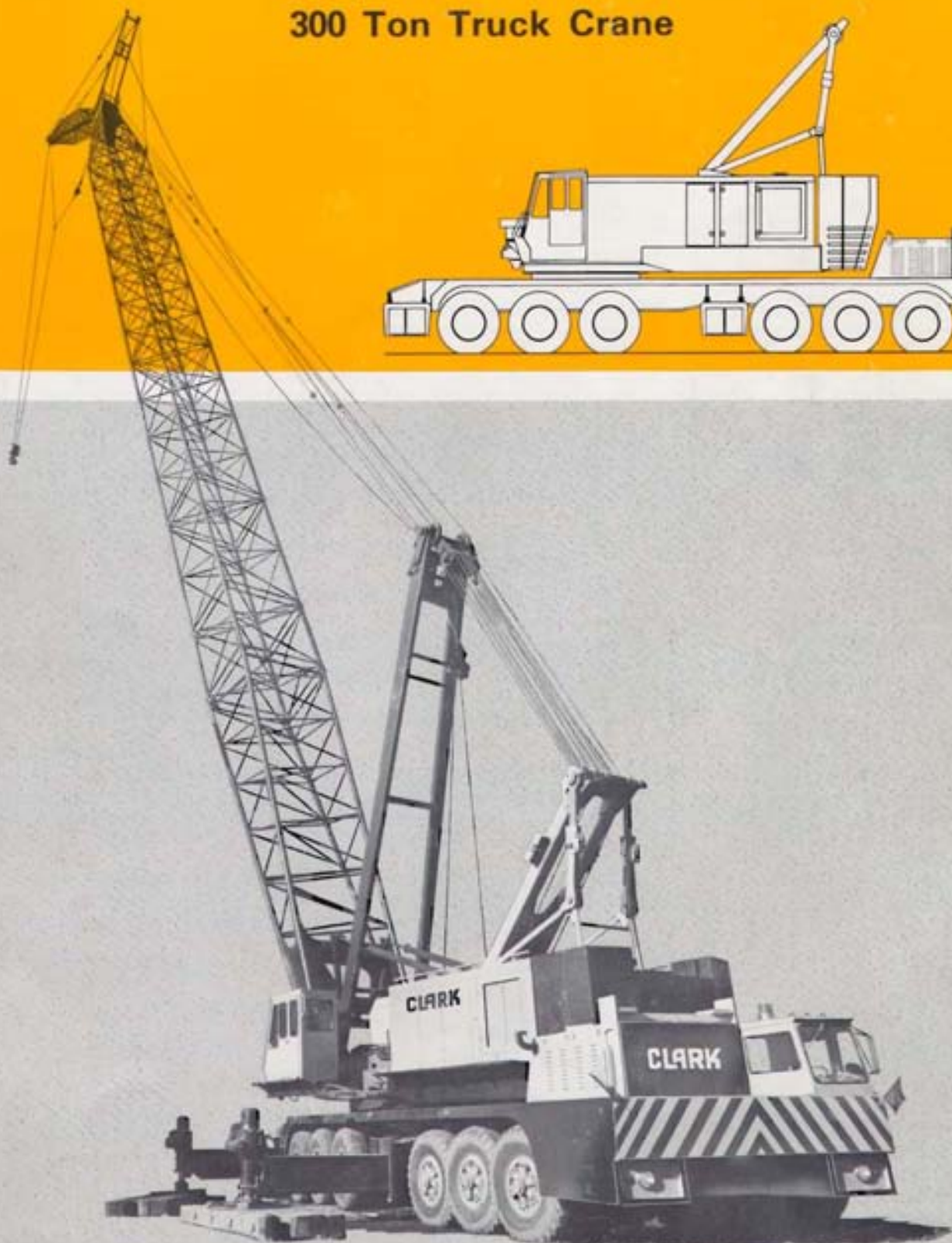
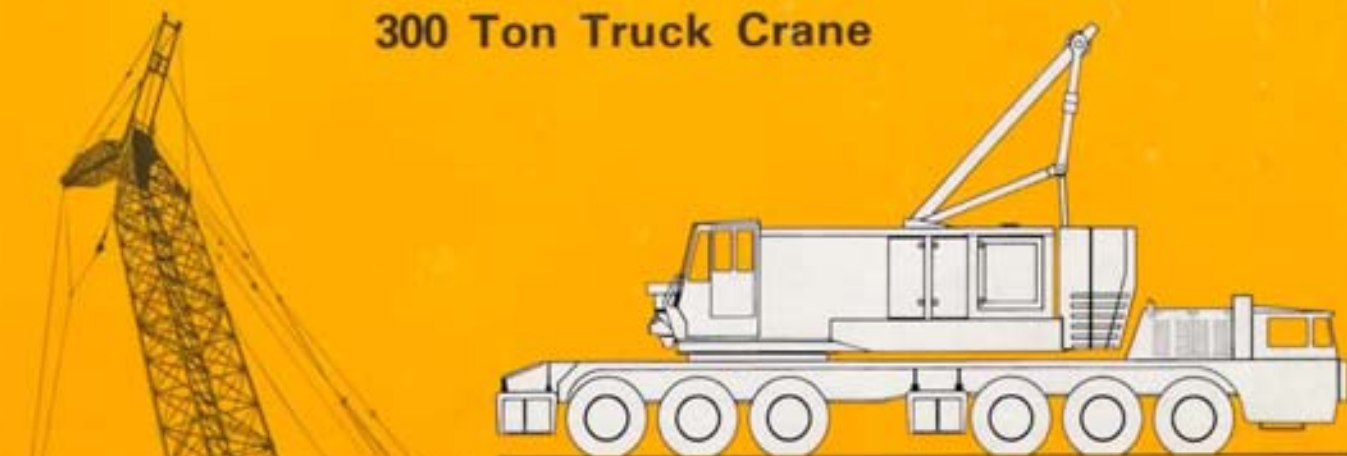


CLARK

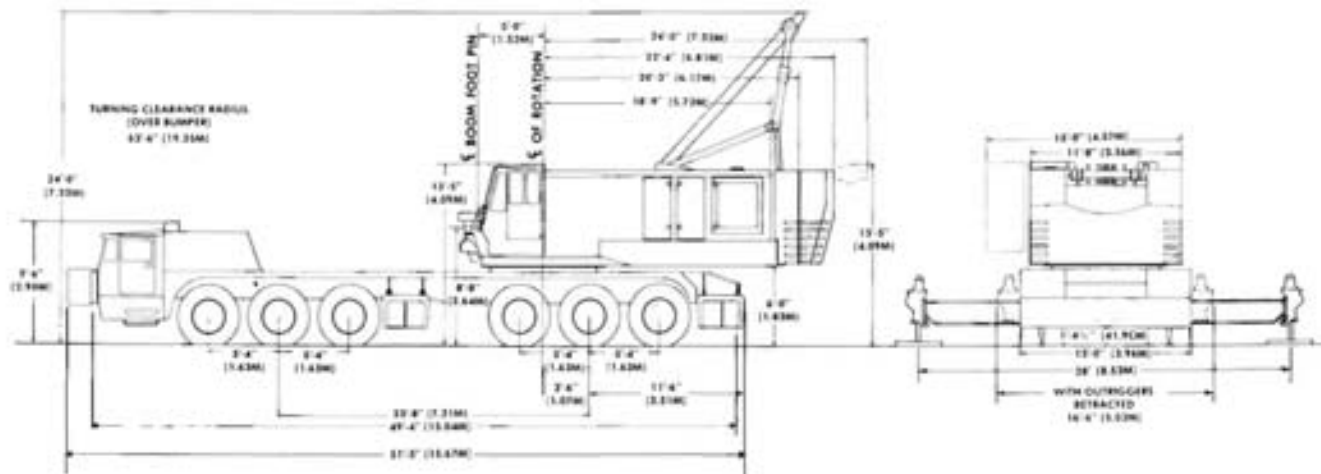
7700

Specifications

300 Ton Truck Crane

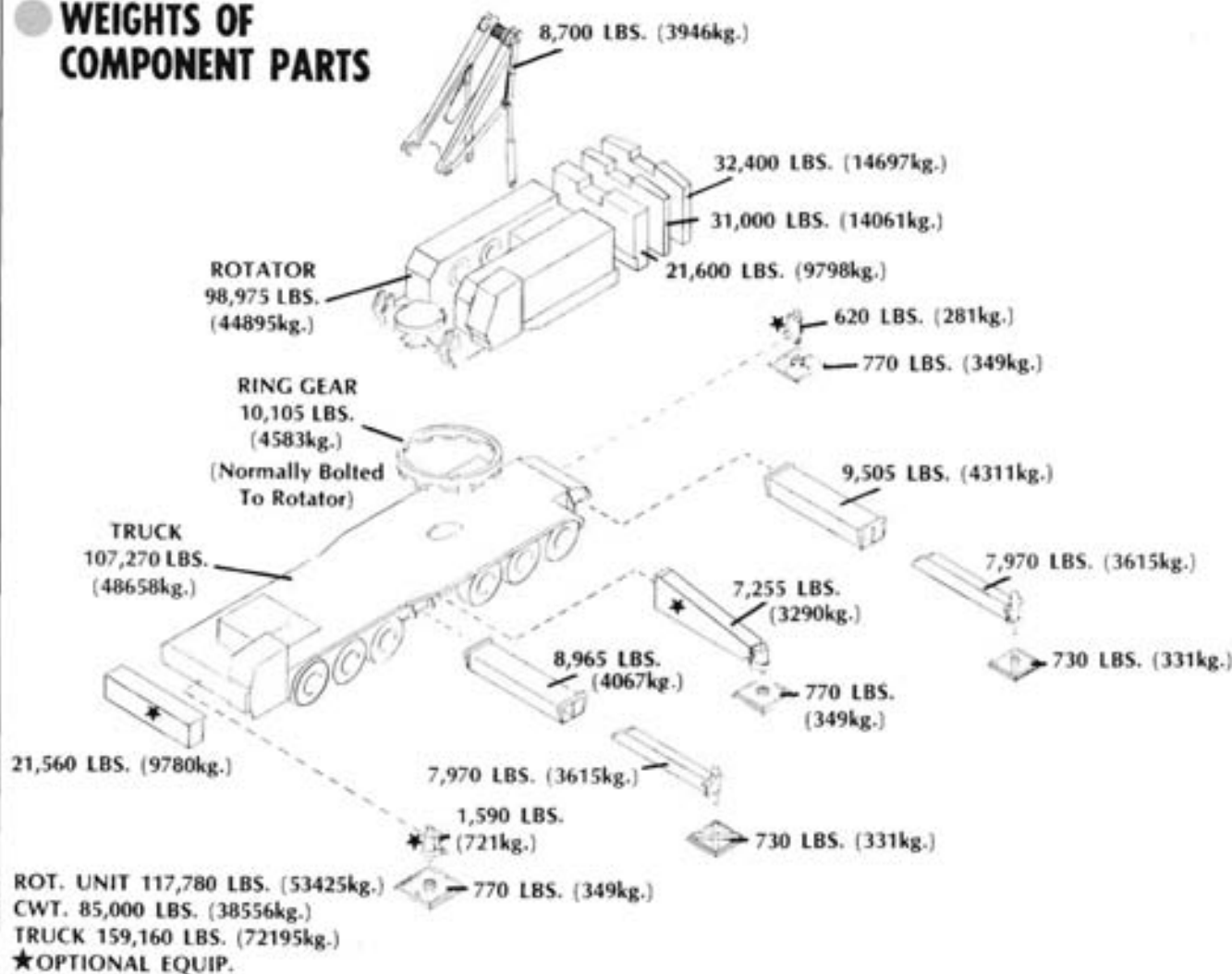


CLEARANCE & DIMENSIONS

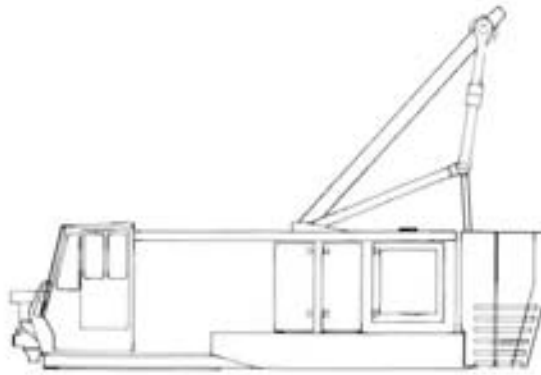


Relative position of the upper works, as shown, is for dimensioning purpose only, and is not recommended for use.

WEIGHTS OF COMPONENT PARTS



R-1

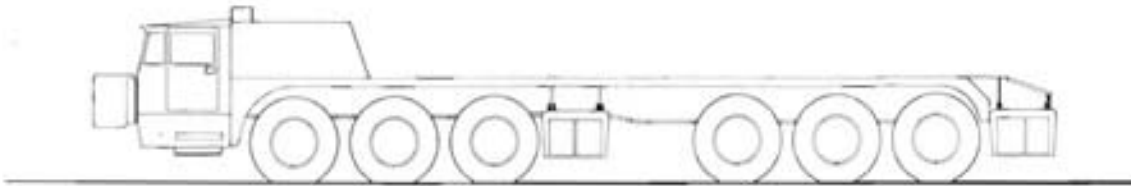


ROTATING ASSEMBLY

Equipment includes: Engine (See Item No. RO-100); independent fully hydraulic two drum boom hoist with infinite speed control and power controlled boom lowering; full hydraulic main hoist with infinite speed control in 2 ranges and power controlled lowering on all drums; multi position hydraulically controlled environmental pod; full hydraulic swing system; roller bearing swing circle; cab shutters; counterweight 85,000# (38 556kg); hydraulically controlled backhitch gantry; positive swing lock; running boards with handrails; signal horn; air and electric control equipment.

202,780 LBS. (91981kg)

T-1



TRUCK MOUNTING

Equipment includes: LIMA truck with 12 x 6 drive; engine (See Item No. TO-35); 16:00" x 25" (40.6cm x 63.5cm) - 24 ply rating tires; 6 speed powershift transmission with electric controls, torque converter and hydraulic retarder; 3 planetary driving axles and inter-axle differential; 3 steering axles with power steering; pin on type outrigger boxes; hydraulic outriggers; air service brakes on all wheels; full width and length deck; fenders; flaps; mast rest; half cab, instruments; controls; directional signals; backup lights; west coast mirrors; and tools.

160,540 LBS. (72821kg)

A-2



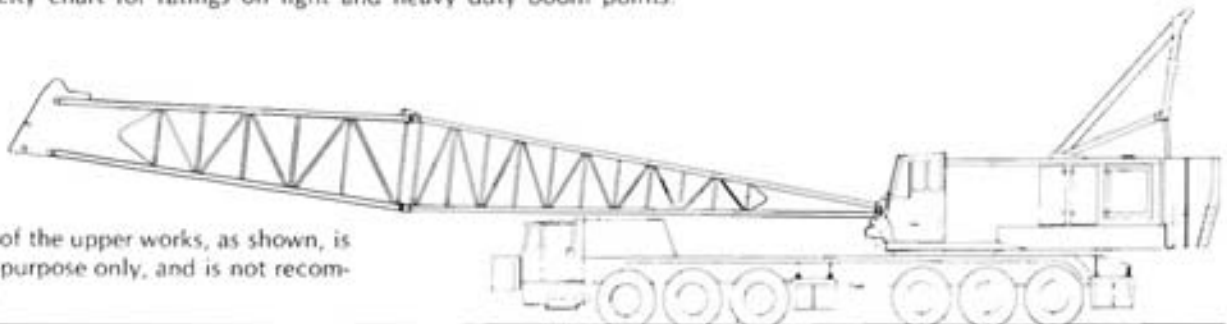
CRANE ATTACHMENT

Equipment includes: 70' (21.34M) pin connected tubular boom [90" (228.6cm) x 108" (274.3cm)] [40' (12.19M) base and 30' (9.14M) heavy duty point section] with 7 sheaves for 15 part reeving; rope guards; mast with 14 part boom hoist reeving; swaged type pendants for basic boom; 38" (96.52cm) front and 38" (96.52cm) rear hoist drums; and telescopic boomstops with electric over air shutoff.

31,365 LBS. (14227kg)

Note: Maximum boom length with heavy duty point section, 250' (76.20M)
 Maximum boom length with light duty point section, 330' (100.58M)
 See capacity chart for ratings on light and heavy duty boom points.

Relative position of the upper works, as shown, is for dimensioning purpose only, and is not recommended for use.



TOTAL WEIGHT OF R-1, T-1 & A-2 = 394,685 LBS. (179 029Kg)

TOTAL WEIGHT OF R-1 & T-1 = 363,320 LBS. (164 802Kg)

● AXLE LOADING AND WEIGHTS

Complete Machine Equipped As Follows: Carrier, Outrigger Boxes, Outrigger Beams, Floats, Rotating Unit, Main Counterweight, and 70' (21.34M) Basic Boom.

Weight Combinations	Boom Position	Front Bogie	Rear Bogie	Total Weight
Complete Machine	F	*	*	*
	R	146,285 Lbs. (66355kg.)	248,400 Lbs. (112674kg.)	394,685 Lbs. (179029kg.)
Machine Less Main Counterweight	F	90,895 Lbs. (41230kg.)	218,790 Lbs. (99243kg.)	309,685 Lbs. (140473kg.)
	R	61,380 Lbs. (27842kg.)	248,305 Lbs. (112631kg.)	309,685 Lbs. (140473kg.)
Machine Less Main Counterweight, Boxes, Beams, and Floats	F	86,670 Lbs. (39314kg.)	169,745 Lbs. (76996kg.)	256,415 Lbs. (116310kg.)
	R	57,155 Lbs. (25926kg.)	199,260 Lbs. (90384kg.)	256,415 Lbs. (116310kg.)
Machine Less Main Counterweight, Boxes, Beams, Floats, and Boom Point Section	F	*	*	*
	R	83,625 Lbs. (37932kg.)	162,330 Lbs. (73633kg.)	245,955 Lbs. (111565kg.)
Machine Less Main Counterweight, Boxes, Beams, Floats, and Complete Boom	F	*	*	*
	R	101,960 Lbs. (46249kg.)	123,090 Lbs. (55834kg.)	225,050 Lbs. (102083kg.)

F — Denotes Boom Extended Forward.

R — Denotes Boom Extended Rearward.

* — Do not travel with this combination and boom location.

Tire Pressure to be 95 P.S.I. (65.5 NPSCm)

For best results, the tire manufacturers recommend the following maximum speeds with the loading shown:

1 2.5 M.P.H. (4.02 KmPH); 2 10 M.P.H. (16.10 KmPH); 3 15 M.P.H. (24.14 KmPH) 4 20 M.P.H. (32.18 KmPH)

Complete Carrier Equipped As Follows: Carrier, Outrigger Boxes, Outriggers, and Floats.

Weight Combinations	Front Bogie	Rear Bogie	Total
Complete Carrier	120,220 Lbs. (54532kg.)	40,320 Lbs. (18289kg.)	160,540 Lbs. (72821kg.)
Carrier Less Outriggers and Floats	51,140 Lbs. (23197kg.)	74,600 Lbs. (33839kg.)	125,740 Lbs. (57036kg.)
Carrier Less Outriggers, Floats, and Outrigger Boxes	49,855 Lbs. (22614kg.)	57,415 Lbs. (26043kg.)	107,270 Lbs. (48658kg.)

Tire Pressure to be 70 P.S.I. (48.3 NPSCm)

The manufacturers recommend not over 50 miles (80.5 Km) be traveled in any 1½ hour period.

● POWER PLANT DATA (CARRIER)

Make	Model	Fuel	Cyl.	Bore & Stroke	Net Horsepower
Cummins	KTA-600	Diesel	6	6¼" x 6¼" (159mm x 159mm)	525 @ 2100 R.P.M.

● PERFORMANCE DATA (CARRIER)

Bare Truck Travel Speed — 43 M.P.H. (69.19 KmPH) on 0% grade.

Fully equipped basic machine can travel up a 21% grade.

Basic machine less counterweight, outrigger boxes, beams, floats, and boom can travel up a 24% grade.

Turning radius — 59 ft. (18m) (curb radius).

Number of travel speeds — 18 forward and 3 reverse.

Tires — 16.00 x 25 (40.6cm x 63.5cm) (24 ply)

DESCRIPTIVE DATA (CARRIER)

Basic, Standard and Optional Components

FRAME: Carrier frame of heavy-duty, all welded construction. Two main members, each of deep box and I-beam section, are joined together by bumper and box section cross members. 100,000 P.S.I. (68944 N/cm²) steel is used in highly stressed members of Frame.

OUTRIGGER BOXES: The two outrigger boxes are fabricated from steel plates. Boxes are of the pin-on design for ease of removal, and are equipped with rollers for ease in rolling out outrigger beams.

OUTRIGGER BEAMS: Four box section extensible beams mounted two in each outrigger box are fabricated of alloy steel and equipped with hydraulic operated screw jacks and floats. Independent control valves for extending each beam and for lowering each hydraulic jack provide precise leveling of truck. Control valve station is portable for unobstructed viewing of jacks.

FRONT TRIDEM SUSPENSION: Front tridem axles are suspended by six alloy steel underslung equalizers, four of which are direct-connected to chassis frame. Two torque rods on each axle maintain proper positioning of axles.

FRONT AXLES: Three tubular-high clearance type. Wheels are mounted on roller bearings.

REAR AXLES: Three planetary rear drive axles, gear ration of 11.455:1. Mid-axle has interaxle differential with lockout.

REAR TRIDEM SUSPENSION: Rear tridem axles are suspended by six alloy steel underslung equalizers, four of which are direct-connected to chassis frame. One torque rod on each axle maintains proper positioning of axles.

WHEELS: Heavy-duty 11.25 x 25 (28.6 cm x 63.5 cm) STND rims, six singles in front, six duals in rear, making a total of eighteen wheels.

TIRES: Eighteen 16.00 x 25 (40.6cm x 63.5cm) — 24 ply rating.

FUEL CAPACITY: 100 gallons (378 Liters).

FENDERS: Fenders are of the combination fender-deck design, providing a flat full width, full length walkway.

SERVICE BRAKES: Air brakes on all wheels. Front brake shoes are 20¼" (51.4cm) diameter x 5" (12.7cm) wide. Rear brake shoes are 20¼" (51.4cm) diameter x 7" (17.8cm) wide.

AUXILIARY BRAKES: Spring set, air released brake cylinders on rear axles lock brakes in case of air loss. Emergency release valve on dash allows some maneuvering after air loss. Auxiliary valve sets brakes for parking.

OPERATING BRAKE: A hand-operated air valve applies the service brakes when required for holding the machine when operating.

STEERING: Power assisted steering, with individual double acting cylinders on each front axle. The cylinders are powered by an engine driven hydraulic pump and metered by a control valve built into the draglink.

MAIN TRANSMISSION: Allison #5960 CLBT six speeds forward and one reverse. Transmission is equipped with TC 690 converter and hydraulic retarder.

AUXILIARY TRANSMISSION: Spicer P1241-C with 3 speeds giving the carrier 18 speeds forward and 3 reverse.

CAB: One-man type, with visor type top. All steel construction, amply ventilated for summer or winter. Adjustable seat. Instrument panel contains speedometer, odometer, ammeter, oil pressure gauge, water temperature gauge, fuel gauge and pilot lights, air gauge, converter oil temperature gauge, light switches, ignition and starter switch.

BUMPER COUNTERWEIGHT: One piece, required when using long boom or boom and jib combination. See "boom and jib data."

MISCELLANEOUS ACCESSORIES: Inflating hose and tire pressure gauge, mast rest, rear view mirrors, two beam headlights, stop and tail light, front, middle and rear marker lights and parking lights, electric directional signals, electric windshield wipers, electric dual horn, fender flaps, heater and defrosters.

POWER PLANT DATA (ROTATOR)

Make	Model	Fuel	Cyl.	Bore & Stroke	Net Horsepower
Cummins	NTA 855C420	Diesel	6	5 1/2" x 6" (13.97cm x 15.24cm)	420 @ 2300

CLUTCH AND BRAKE DATA

Function	CLUTCHES				BRAKES			
	Type	Width	Diameter	Area	Type	Width	Diameter	Area
Main Hoist	Band	4 1/2" (11.43cm)	43" (109.2cm)	518 In ² (3342cm ²)	Band	6" (15.24cm)	50" (127cm)	748 In ² (4826cm ²)
Auxiliary Hoist	Band	4 1/2" (11.43cm)	43" (109.2cm)	518 In ² (3342cm ²)	Band	6" (15.24cm)	50" (127cm)	748 In ² (4826cm ²)
Boom Hoist	Band	—	—	—	Band	4" (101.6cm)	15" (38.1cm)	145 In ² (935cm ²)
Swing Brake	Band	—	—	—	Band	4" (10.16cm)	26" (66cm)	258 In ² (1665cm ²)
Third Drum	Band	4 1/2" (11.43cm)	43" (109.2cm)	518 In ² (3342cm ²)	Band	6" (15.24cm)	50" (127cm)	748 In ² (4826cm ²)

LAGGING DATA

Lagging Location	Use	Drum P.D.	Drum Width	Type	Eff. Capy. 1st Layer	Maximum Capy. Layers	Wire Rope Size
Boom Hoist Shaft	Boom Hoist	15" (38.1cm)	14-7/16" (36.7cm)	Grooved	90' (27.4M)	1002' (305.4M) in 7	1" (25.4mm)
Rear Hoist Shaft	Main Hoist	24" (61cm)	38" (96.5cm)	Grooved	191' (58.2m)	1,796' (547.4M) in 7	1-1/8" (28.6mm)
Right Hand Front Hoist Shaft	Auxiliary Hoist	24" (61cm)	17 1/2" (44.5cm)	Grooved	79' (24.1M)	658' (200.6M) in 6	1-1/8" (28.6mm)
Left Hand Front Hoist Shaft	Third Drum	24" (61cm)	17 1/2" (44.5cm)	Grooved	79' (24.1M)	658' (200.6m) in 6	1-1/8" (28.6mm)
Front Hoist Shaft	Full Width Front Drum	24" (61cm)	38" (96.5cm)	Grooved	191' (58.2M)	1,796' (547.4M) in 7	1-1/8" (28.6mm)

MISCELLANEOUS DATA (ROTATOR)

Swing Speed	2.1 R.P.M.
Fuel Capacity	200 Ga. (757 Liters)

DESCRIPTIVE DATA (ROTATING ASSEMBLY)

Basic, Standard and Optional Components

ROTATING BASE: Fabricated with integral machine frames using alloy steel for strong, lightweight construction. Separate fuel tank.

SHAFTING: All shafting made from heat treated alloy steel. Involute splines used extensively.

SWING: Separate gear box provides power for swing. This assembly easily removed for service. Driven by hydraulic motor controlled by special fine-metering valve for precise swing control. Vertical swing shaft and pinion is one piece forging. Gearing runs in oil.

SWING BRAKE: A band brake at top of swing assembly is spring set, air release controllable by the operator. Also a swing snub operates this band brake for momentarily holding while setting loads.

SWING LOCK: A pawl engages in slots at the bottom of the swing brake housing and can be used as a upper unit parking lock.

FRONT DRUM SHAFT: Supported by self-aligning anti-friction bearings. Can have either two drums or a full width single drum. All drums are mounted on anti-friction bearings.

REAR DRUM SHAFT: Supported by self-aligning anti-friction bearings. A full width single drum for maximum rope capacity is mounted on anti-friction bearings.

HOIST CLUTCHES: Air actuated — internal expanding friction band type.

HOIST BRAKES: External contracting friction band type. Spring set — air release parking feature with an air actuated, foot pedal applied, operating brake. Separate brakes for each drum.

HOIST DRUM RATCHET: Each drum has a spring set, air release ratchet that's controllable by the operator.

HOIST POWER: Full hydraulic — hydraulic motor powers a selectable transmission to give two speed ranges, which in turn, thru a gear train, powers both front and rear drum shafts. The hydraulic motor is controlled by varying the flow of oil from the hoist pump which give infinite speed control in both raising and lowering directions. This provides Power Load Lowering on all drums with the same speed and precision as raising a load. Gearing runs in oil.

BOOM HOIST: Is a self-contained unit that pins to the rotating base. Two hydraulic motors, through a gear reduction, drive two drums keyed to a common shaft. Two external contracting friction band brakes are spring set — air release type that release automatically when powering up or down and set automatically when boom hoisting operation stops. The hydraulic motors are controlled by varying the flow from the boom hoist pump. This gives infinite speed control both raising and lowering the boom.

BOOM HOIST RATCHET: Ratchet on the drum shaft is spring set — air release and controllable by the operator.

BOOMS AND JIBS: Extensible type with tubular T1 chords — refer to boom and jib data.

BOOM STOP: Telescopic with automatic air cut-off of boom hoisting power. Stops are attached to the boom base or to the mast when using it as a boom.

BOOM SUSPENSION: 14-part line from gantry to mast. Slings from mast to boom point with mid-point suspension when boom length dictates.

COUNTERWEIGHT: Three piece — cast iron hooked on at rear of rotating frame. Readily removable for weight reduction.

COUNTERWEIGHT REMOVAL EQUIPMENT: Using links and gantry hydraulic cylinders, the counterweights can be removed or added in two sections rapidly and smoothly.

GANTRY: Back hitch type with the rear legs made up of two hydraulic cylinders and telescopic sections. Can be pinned up at maximum height for working and pinned down at cab height for traveling.

MACHINERY CAB: Steel construction with doors and hatches conveniently located for easy service of engine and machinery. All doors can be latched open or closed. Louvers are adjustable to provide proper heating or cooling to engine and hydraulic components.

OPERATOR'S POD: Swings in for shipping — nothing has to be disconnected or removed — and swings out for working. Hydraulically controlled from operator's seat or from ground. All steel construction, full 360° vision with rubber-set windows. Front and right hand windows can be opened. Can be heated, air conditioned, and is sound conditioned for operator's comfort.

SWING CIRCLE: Upper rotating unit mounts on a roller bearing swing circle that has internal cut teeth which mate with the swing pinion. Circulating oil lubricates the gear teeth. The inner half of the swing circle mounts to the truck by extended tangs that fit into slots in the truck. Adjustable wedges lock these tangs in place, affording easy and rapid removal of the upper from the truck.

GEARING: Note — All gears are fully enclosed and run in oil.

POWER TAKE-OFF: Engine driven pump drive gear box that has a master clutch disconnect. Each function, swing, boom hoist, hoist, and propel (for crawler version) has a separate pump for independent control.

HYDRAULIC SYSTEM: Steel tubing and hose connect the pumps and motors. The tank is equipped with filters, strainers, and level indicator. An oil cooler is mounted in front of the engine radiator.

OPTIONAL INDEPENDENT DRIVE FRONT DRUM: This has a separate hydraulic pump and motor to power the front drum with all the control features of the rear drum power. This offers more versatility to the hoisting function.

MAXIMUM BOOM OR BOOM PLUS JIB THAT CAN BE HANDLED HORIZONTALLY

OVER REAR ON STANDARD AND REAR AUXILIARY OUTRIGGERS		OVER SIDE ON STANDARD OUTRIGGERS	
Less Bumper Counterweight	With Bumper Counterweight	Less Bumper Counterweight	With Bumper Counterweight
330' (100.58M)	330' (100.58M)	300' (91.44M)	310' (94.49M)
310' (94.49M) + 40' (12.19M)	330' (100.58M) + 40' (12.19M)	270' (82.30M) + 40' (12.19M)	270' (82.30M) + 40' (12.19M)
300' (91.44M) + 50' (15.24M)	330' (100.58M) + 50' (15.24M)	240' (73.15M) + 50' (15.24M)	240' (73.15M) + 50' (15.24M)
290' (88.39M) + 60' (18.29M)	320' (97.54M) + 60' (18.29M)	240' (73.15M) + 60' (18.29M)	240' (73.15M) + 60' (18.29M)
290' (88.39M) + 70' (21.34M)	320' (97.54M) + 70' (21.34M)	240' (73.15M) + 70' (21.34M)	240' (73.15M) + 70' (21.34M)
290' (88.39M) + 80' (24.38M)	310' (94.49M) + 80' (24.38M)	230' (70.10M) + 80' (24.38M)	230' (70.10M) + 80' (24.38M)
280' (85.34M) + 90' (27.43M)	310' (94.49M) + 90' (27.43M)	230' (70.10M) + 90' (27.43M)	230' (70.10M) + 90' (27.43M)
280' (85.34M) + 100' (30.48M)	310' (94.49M) + 100' (30.48M)	220' (67.06M) + 100' (30.48M)	220' (67.06M) + 100' (30.48M)

OVER REAR ON STANDARD OUTRIGGERS		OVER SIDE WITH AUXILIARY AND STANDARD OUTRIGGERS
Less Bumper Counterweight	With Bumper Counterweight	With Bumper Counterweight
330' (100.58M)	330' (100.58M)	320' (97.54M)
280' (85.34M) + 40' (12.19M)	310' (94.49M) + 40' (12.19M)	280' (85.34M) + 40' (12.19M)
270' (82.30M) + 50' (15.24M)	300' (91.44M) + 50' (15.24M)	280' (85.34M) + 50' (15.24M)
270' (82.30M) + 60' (18.29M)	300' (91.44M) + 60' (18.29M)	270' (82.30M) + 60' (18.29M)
270' (82.30M) + 70' (21.34M)	290' (88.39M) + 70' (21.34M)	270' (82.30M) + 70' (21.34M)
240' (73.15M) + 80' (24.38M)	290' (88.39M) + 80' (24.38M)	270' (82.30M) + 80' (24.38M)
240' (73.15M) + 90' (27.43M)	280' (85.34M) + 90' (27.43M)	250' (76.20M) + 90' (27.43M)
240' (73.15M) + 100' (30.48M)	280' (85.34M) + 100' (30.48M)	240' (73.15M) + 100' (30.48M)

BOOM DATA

Component	Light Duty Boom	Heavy Duty Boom
Point Shaft	1,100 Lbs. (499kg)	2,600 Lbs. (1179kg.)
30' (13.61M) Point Section	5,160 Lbs. (2341kg.)	6,890 Lbs. (3125kg.)
40' (12.19M)	7,725 Lbs. (3504kg.)	7,725 Lbs. (3504kg.)
Basic Pendants Base Section	800 Lbs. (363kg.)	970 Lbs. (440kg.)
10' (3.05M) Extension With Pendants	1,825 Lbs. (828kg.)	1,895 Lbs. (860kg.)
20' (6.10M) Extension With Pendants	2,900 Lbs. (1315kg.)	2,975 Lbs. (1349kg.)
40' (12.19M) Extension With Pendants	4,995 Lbs. (2266kg.)	5,095 Lbs. (2311kg.)
40' (12.19M) Mast	8,275 Lbs. (3754kg.)	8,275 Lbs. (3754kg.)
Boom Stop	1,365 Lbs. (619kg.)	1,365 Lbs. (619kg.)
Midpoint Suspension 170' (51.82M) Boom to 230' (70.10M) Boom	1,050 Lbs. (476kg.)	1,050 Lbs. (476kg.)
Midpoint Suspension 240' (73.15M) Boom to 260' (79.25M) Boom	1,190 Lbs. (540kg.)	1,190 Lbs. (540kg.)
Midpoint Suspension 270' (82.30M) Boom and 330' (100.58M) Boom	1,420 Lbs. (644kg.)	1,420 Lbs. (644kg.)
Boom Hoist Wire Rope	2,460 Lbs. (1116kg.)	2,460 Lbs. (1116kg.)
Main Hoist Wire Rope	3,750 Lbs. (1702kg.)	3,750 Lbs. (1702kg.)
Auxiliary Hoist Wire Rope	2.46 Lbs./Ft. (3.66kg./M)	2.46 Lbs./Ft. (3.66kg./M)
300 Ton Hookblock	5,400 Lbs. (2449kg.)	5,400 Lbs. (2449kg.)
40 Ton Hookblock	1,100 Lbs. (499kg.)	1,100 Lbs. (499kg.)
20 Ton Ball and Hook	800 Lbs. (363kg.)	800 Lbs. (363kg.)

Boom Make-up: The first 70' (21.34M) of boom extensions adjacent to the boom base must be 6" (152mm) O.D. tubing; all remaining extensions should be 5 1/4" (146mm) O.D. tube. The heavy duty boom point section with heavy duty point shaft is to be installed on booms 70' (21.34M) thru 250' (76.20M); the light duty boom point with light duty point shaft is to be installed on booms 260' (79.25M) thru 330' (100.58M).

Component	Heavy Duty Jib
Basic Jib Length	40' (12.19M)
Maximum Length	100' (30.48M)
Basic Jib	5,040 Lbs. (2286kg.)
10' (3.05M) Extension With Pendant	660 Lbs. (299kg.)
20' (6.10M) Extension with Pendant	1,005 Lbs. (456kg.)

BOOM AND JIB DATA

JIB	
Basic Length	40' (12.19M)
Max. Length	100' (30.48M)
Section	46" x 52" (1.7M x 1.32M)
Chord Size	2 1/2" (6.35cm) O.D. Tube
Chord Material	100,000 P.S.I. (68944 N/cm ²)
Quan. Sheaves at Point	One (1)
P.D. Point Sheave	21-3/8" (54.3cm) P.D.
Capacity	
40' (12.19M)	40 Tons (36.3 Tons)
50' (15.24M)	31 1/2 Tons (28.6 Tons)
60' (18.29M)	24 Tons (21.8 Tons)
70' (21.34M)	20 Tons (18.1 Tons)
80' (24.38M)	18 Tons (16.3 Tons)
90' (27.43M)	15 1/2 Tons (14.1 Tons)
100' (30.48M)	13 1/2 Tons (12.2 Tons)

BOOM, TUBULAR PIN CONNECTED	
Type Service	Crane
Suspension	Mast and Pendants
Gantry	High Back Hitch
Mast	40' (12.19M)
Quan. Sheaves at Point Shaft	Light Duty Point 3
	Heavy Duty Point 7
Dia. Point Sheaves	21-3/8" (54.3cm) P.D. — 1-1/8" (29mm) Dia. Wire Rope
Basic Boom Length	70' (21.34M)
Chord Material	100,000 P.S.I. (68944 N/cm ²) Steel
Extensions	10', 20', and 40' Straight (3.05M, 6.10M, and 12.19M)
Section	90" x 108" (2.29M x 2.74M)
Max. Boom Length	330' (100.58M)
Chord Dimensions	Light Duty 5-3/4" O.D. (146mm) Tube
	Heavy Duty 6" O.D. (152mm) Tube

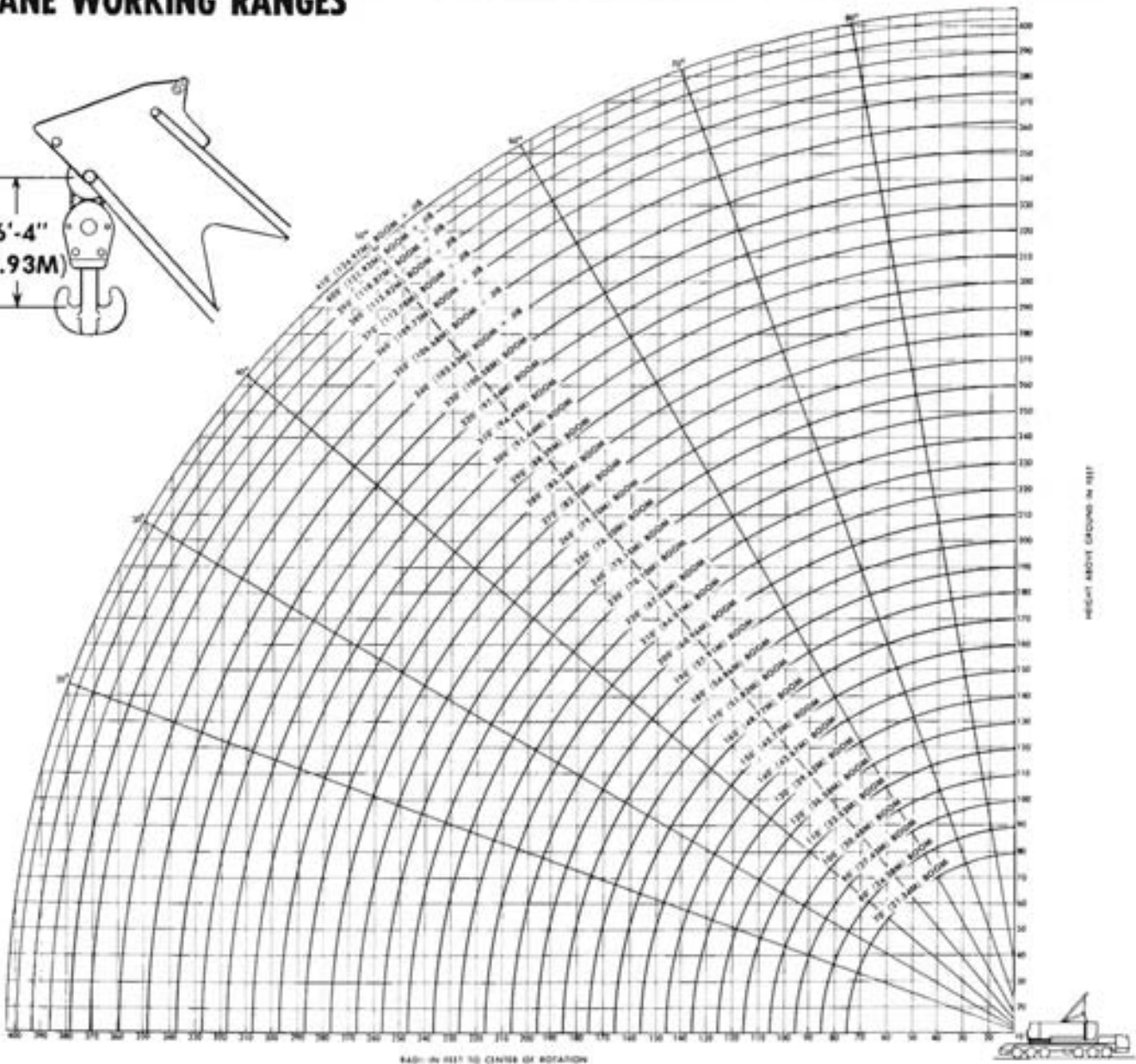
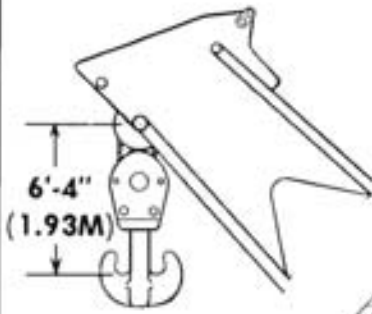
HOIST LINE DATA

Typical Hoist Performance Both Front & Rear Hoist Shafts		
Speed Range	Line Pull	Line Speed
1st	40,000 Lbs. (18144kg.)	180 F.P.M. (54.86M.P.M.)
2nd	20,000 Lbs. (9072kg.)	350 F.P.M. (106.68M.P.M.)

Optional Independent Front Drive Hoist Typical Hoist Performance Front Hoist Only	
Line Pull	Line Speed
25,000 Lbs. (11340kg.)	185 F.P.M. (56.39 M.P.M.)



CRANE WORKING RANGES



HEIGHT ABOVE GROUND IN FEET

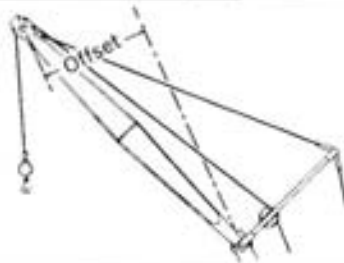
RADIUS IN FEET TO CENTER OF ROTATION



WIRE ROPE REEVING FOR HOOK BLOCKS

Parts of Line Rope Load	Parts of Line Required
To 40,000 Lbs. (18144kg.)	1
Over 40,000 Lbs. (18144kg.)	2
Over 80,000 Lbs. (36288kg.)	3
Over 120,000 Lbs. (54432kg.)	4
Over 160,000 Lbs. (72576kg.)	5
Over 200,000 Lbs. (90720kg.)	6
Over 240,000 Lbs. (108864kg.)	7
Over 280,000 Lbs. (127008kg.)	8
Over 320,000 Lbs. (145152kg.)	9
Over 360,000 Lbs. (163296kg.)	10
Over 400,000 Lbs. (181440kg.)	11
Over 440,000 Lbs. (199584kg.)	12
Over 480,000 Lbs. (217728kg.)	13
Over 520,000 Lbs. (235872kg.)	14
Over 560,000 Lbs. (254016kg.)	15

Required 1-1/8" (29mm) Dia. Wire Rope having a minimum breaking strength of 143,000 lbs. (64865kg.)



JIB DATA

Jib Length	Rating	Offset	Effective Weight
40' (12.19M)	40 Tons (36.3 Tons)	13'-6" (4.11M)	4,600 Lbs. (2087kg.)
50' (15.24M)	31½ Tons (28.6 Tons)	17'-4" (5.28M)	5,450 Lbs. (2472kg.)
60' (18.29M)	24 Tons (21.8 Tons)	20'-7" (6.27M)	6,350 Lbs. (2880kg.)
70' (21.34M)	20 Tons (18.1 Tons)	24'-7" (7.49M)	6,975 Lbs. (3164kg.)
80' (24.38M)	18 Tons (16.3 Tons)	26'-10" (8.18M)	8,025 Lbs. (3640kg.)
90' (27.43M)	15½ Tons (14.1 Tons)	31'-10" (9.70M)	8,775 Lbs. (3980kg.)
100' (30.48M)	13½ Tons (12.2 Tons)	33'- 3" (10.13M)	10,000 Lbs. (4536kg.)

Jib capacities are approximately the same as Boom Capacities at any given radius, but not to exceed the rating listed. Effective jib weight to be subtracted from Boom capacity chart if load is raised on Boom point when jib is assembled on Boom.

CRANE LIFTING CAPACITIES

LITE DUTY

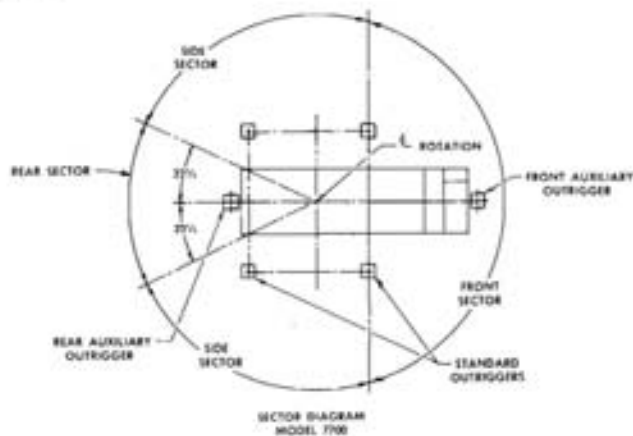
TUBULAR BOOM 300 TON CLASS 16-2450										CRANE CAPACITY CHART OVER SIDE AND OVER REAR ON STANDARD OUTRIGGERS												
Boom				Capacity	Boom				Capacity	Boom				Capacity	Boom				Capacity			
L	R	A	H		L	R	A	H		L	R	A	H		L	R	A	H				
70	38	81.0	77.5	1600,000	150	35	79.2	155.6	299,800	230	45	79.6	214.8	201,600	260	60	78.2	262.8	129,000			
	20	79.4	77.1	1517,700		40	77.3	154.5	244,200		50	78.2	213.8	171,300		70	75.9	260.4	102,000			
	25	75.1	73.8	1480,200		45	75.3	153.2	202,200		60	75.4	211.3	129,900		80	73.6	257.6	81,300			
	30	70.8	74.1	1391,000		50	73.3	151.8	171,900		70	72.5	208.4	103,000		90	71.1	254.4	69,200			
	35	66.4	71.9	107,000		60	69.3	148.2	131,000		80	69.6	204.8	84,200		100	69.0	250.7	58,500			
	40	63.7	69.3	245,000		70	65.1	141.8	104,800		90	66.7	200.7	70,400		120	66.6	246.5	50,000			
	45	56.9	66.1	203,000		80	60.8	138.5	86,200		100	61.7	196.0	59,700		130	64.2	241.9	41,100			
	50	51.7	62.3	172,700		90	56.1	132.2	72,500		110	60.5	190.5	51,300		130	61.7	236.6	37,400			
	60	40.0	52.0	131,800		100	51.5	124.7	62,000		120	57.3	184.4	44,500		140	59.1	230.9	32,700			
	70	23.6	34.7	105,600		110	46.4	115.8	53,700		130	54.0	177.4	38,900		150	56.5	224.5	28,600			
80	25	77.0	86.1	1480,100	150	120	42.7	105.0	46,900	230	140	50.5	169.5	34,900	260	160	53.8	217.4	25,100			
	30	73.3	84.7	1390,900		130	34.3	91.6	41,400		150	46.9	160.6	30,100		170	51.0	209.6	22,000			
	35	69.5	82.9	1306,900		140	26.6	74.0	36,700		160	43.0	150.4	26,600		180	48.1	201.0	19,300			
	40	65.6	80.6	1244,900		150	15.6	47.1	32,600		170	38.8	138.6	23,500		190	45.0	191.4	16,900			
	45	61.5	78.0	1202,900		150	160	14.1	34.8		29,900	230	180	34.1		124.8	20,900	260	200	41.8	180.6	14,800
	50	57.3	74.8	1172,600			170	28.8	98.1		26,500		190	28.8		98.1	18,500		210	38.4	168.6	12,800
	60	48.1	66.8	1131,700			180	22.1	86.6		24,400		200	22.1		86.6	16,400		220	34.6	154.9	11,100
	70	37.2	55.3	105,500			190	13.1	54.3		21,400		210	13.1		54.3	14,500		230	30.3	139.0	9,300
	80	23.9	36.6	87,300			200	7.9	36.5		19,000		220	7.9		36.5	13,200		240	25.7	119.9	7,300
	25	78.5	96.4	1479,400			210	66.8	154.9		130,900		230	78.7		224.0	113,200		250	20.0	95.7	5,700
30	75.2	95.1	1390,600	220	60.2		150.0	116,100	240	76.0	221.7		129,800	260	11.7	39.4	4,600					
35	71.9	93.5	1306,800	230	58.6		144.2	103,300	250	73.3	218.8		102,900	260	60	78.8	273.0		128,900			
40	68.5	91.6	1244,800	240	54.3		137.4	91,800	260	70.6	215.5		84,100		70	76.5	270.7		101,900			
45	65.0	89.1	1202,800	250	49.7		129.4	81,500	270	67.8	211.6		70,300		80	74.1	268.0		83,000			
50	61.3	86.6	1172,500	260	44.8	119.9	72,300	280	64.9	207.1	59,600	90	72.0		264.9	69,100						
60	51.7	79.9	1131,600	270	39.4	108.6	64,100	290	62.0	202.0	51,200	100	69.8		261.4	58,400						
70	45.1	70.9	105,400	280	33.2	94.6	56,400	300	59.0	196.2	44,400	110	67.5		257.4	49,900						
80	34.9	58.3	87,100	290	25.7	76.3	50,400	310	55.9	189.7	38,800	120	65.2		253.0	43,000						
90	20.6	38.3	73,600	300	15.1	48.4	45,200	320	52.7	182.4	34,000	130	62.8		248.0	37,300						
25	79.7	106.7	1479,300	310	10.7	34.2	40,900	330	45.7	174.1	30,000	140	60.4		242.5	32,600						
30	76.7	105.5	1390,700	320	9.7	31.2	37,500	340	41.9	154.2	26,400	150	57.9		236.4	28,500						
35	73.7	104.1	1306,700	330	8.7	28.2	34,900	350	37.6	142.0	23,600	160	55.4	229.7	25,000							
40	70.7	102.4	1244,700	340	7.8	25.2	32,300	360	33.3	127.7	20,800	170	52.7	222.4	21,900							
45	67.6	100.3	1202,700	350	6.8	22.2	29,700	370	28.1	110.5	18,300	180	50.0	214.3	19,200							
50	64.5	98.0	1172,400	360	5.7	19.2	27,100	380	21.8	88.5	16,400	190	47.1	205.1	16,800							
60	57.8	92.2	1131,500	370	4.6	16.2	24,500	390	12.8	55.1	14,700	200	44.2	195.4	14,700							
70	50.7	84.7	105,300	380	3.5	13.2	21,900	400	7.9	36.5	13,200	210	41.0	184.4	12,700							
80	42.6	74.8	87,000	390	2.4	10.2	19,300	410	6.8	33.5	11,700	220	37.6	172.0	11,000							
90	33.0	61.4	73,500	400	1.3	7.2	16,700	420	5.7	30.5	10,200	230	33.9	157.9	9,200							
100	19.4	40.9	61,200	410	0.2	4.2	14,100	430	4.6	27.5	8,700	240	29.9	141.1	7,200							
25	77.9	115.8	1390,600	420	0.1	1.2	11,500	440	3.5	24.5	7,200	250	25.2	122.1	5,600							
30	75.3	114.5	1306,600	430	0.1	0.2	8,900	450	2.4	21.5	5,700	260	19.6	97.4	4,500							
35	72.5	112.9	1244,600	440	0.1	0.2	6,700	460	1.3	18.5	4,200	270	14.8	80.4	3,400							
40	69.8	111.1	1202,600	450	0.1	0.2	4,500	470	0.2	15.5	2,700	280	9.9	63.4	2,300							
50	66.9	109.0	1172,300	460	0.1	0.2	2,900	480	0.1	12.5	1,200	290	5.0	46.4	1,200							
60	61.1	103.9	1131,400	470	0.1	0.2	1,300	490	0.1	9.5	500	300	0.1	29.4	500							
70	54.9	97.4	105,200	480	0.1	0.2	600	500	0.1	6.5	200	310	0.1	12.4	500							
80	48.1	89.1	86,900	490	0.1	0.2	200	510	0.1	3.5	100	320	0.1	4.4	500							
90	40.5	78.5	71,400	500	0.1	0.2	100	520	0.1	1.5	50	330	0.1	1.4	500							
100	31.4	64.1	62,900	510	0.1	0.2	50	530	0.1	0.5	25	340	0.1	0.4	500							
110	18.5	41.5	54,600	520	0.1	0.2	25	540	0.1	0.2	12	350	0.1	0.1	500							
25	77.9	115.8	1390,600	530	0.1	0.2	12	550	0.1	0.1	6	360	0.1	0.1	500							
30	75.3	114.5	1306,600	540	0.1	0.2	6	560	0.1	0.1	3	370	0.1	0.1	500							
35	72.5	112.9	1244,600	550	0.1	0.2	3	570	0.1	0.1	1	380	0.1	0.1	500							
40	69.8	111.1	1202,600	560	0.1	0.2	1	580	0.1	0.1	0	390	0.1	0.1	500							
50	66.9	109.0	1172,300	570	0.1	0.2	0	590	0.1	0.1	0	400	0.1	0.1	500							
60	61.1	103.9	1131,400	580	0.1	0.2	0	600	0.1	0.1	0	410	0.1	0.1	500							
70	54.9	97.4	105,200	590	0.1	0.2	0	610	0.1	0.1	0	420	0.1	0.1	500							
80	48.1	89.1	86,900	600	0.1	0.2	0	620	0.1	0.1	0	430	0.1	0.1	500							
90	40.5	78.5	71,400	610	0.1	0.2	0	630	0.1	0.1	0	440	0.1	0.1	500							
100	31.4	64.1	62,900	620	0.1	0.2	0	640	0.1	0.1	0	450	0.1	0.1	500							
110	18.5	41.5	54,600	630	0.1	0.2	0	650	0.1	0.1	0	460	0.1	0.1	500							
25	77.9	115.8	1390,600	640	0.1	0.2	0	660	0.1	0.1	0	470	0.1	0.1	500							
30	75.3	114.5	1306,600	650	0.1	0.2	0	670	0.1	0.1	0	480	0.1	0.1	500							
35	72.5	112.9	1244,600	660	0.1	0.2	0	680	0.1	0.1	0	490	0.1	0.1	500							
40	69.8	111.1	1202,600	670	0.1	0.2	0	690	0.1	0.1	0	500	0.1	0.1	500							
50	66.9	109.0	1172,300	680	0.1	0.2	0	700	0.1	0.1	0	510	0.1	0.1	500							
60	61.1	103.9	1131,400	690	0.1	0.2	0	710	0.1	0.1	0	520	0.1	0.1	500							
70	54.9	97.4	105,200	700	0.1	0.2	0	720	0.1	0.1	0	530	0.1	0.1	500							
80	48.1	89.1	86,900	710	0.1	0.2	0	730	0.1	0.1	0	540	0.1	0.1	500							
90	40.5	78.5	71,400	720	0.1	0.2	0	740	0.1	0.1	0	550	0.1	0.1	500							
100	31.4	64.1	62,900	730	0.1	0.2																

MAXIMUM MAIN COUNTERWEIGHT — 85,000 LBS
 MAXIMUM BUMPER COUNTERWEIGHT — 21,600 LBS

Booms				Capacity	Capacities Below Apply To Jobs — See Job Data												
L	R	A	H		Boom Plus Job		Capacity		Boom Plus Job		Capacity		Boom Plus Job		Capacity		
					Length	Radius	Length	Radius	Length	Radius	Length	Radius	Length	Radius			
300'	40'	79.8	303.6	124,800	140'	80'	80,000	130' + 40'	90'	72,200	130' + 50'	90'	63,000	130' + 90'	130'	31,000	
	70'	77.8	301.5	101,600		90'	72,800		100'	60,800		100'	62,100		130'	31,000	
	80'	75.9	299.1	82,700		100'	61,400		110'	51,600		110'	52,900		130'	31,000	
	90'	73.9	296.4	68,800		110'	52,400		120'	44,500		120'	45,400		140'	29,200	
	100'	71.9	293.2	58,100		120'	45,100		130'	38,400		130'	39,200		140'	29,200	
	110'	69.9	289.7	49,600		130'	39,100		140'	33,300		140'	34,000		160'	25,800	
	120'	67.8	285.7	42,700		140'	34,000		150'	28,900		150'	29,500		170'	22,700	
	130'	65.7	281.4	37,000		150'	29,700		160'	25,700		160'	26,300		190'	20,000	
	140'	63.6	276.6	32,300		160'	25,900		170'	22,600		170'	23,200		200'	17,600	
	Midpoint Location	150'	61.4	271.7		28,200	170'		22,600	180'		19,800	180'		20,400	210'	15,400
	160'	59.2	265.5	24,700		180'	19,800		190'	17,200		190'	17,800		230'	13,400	
	170'	57.0	259.2	21,600		190'	17,200		200'	15,000		200'	15,600		240'	11,600	
180'	54.7	252.3	18,900	200'	15,000	210'	12,900	210'	13,400	250'	10,000						
Midpoint Sag 17"	200'	49.8	236.6	16,400	210'	12,900	220'	10,300	220'	10,500	260'	8,400					
210'	47.2	227.7	12,400	220'	11,100	230'	9,100	230'	9,600	270'	7,000						
220'	44.6	217.9	9,700	230'	9,100	240'	7,600	240'	8,000	280'	5,900						
230'	41.8	207.1	7,800	240'	7,600	250'	6,300	250'	6,700	290'	5,200						
240'	38.8	195.2	6,400	250'	6,300	260'	5,400	260'	5,700	300'	4,700						
250'	35.6	181.8	5,300	260'	5,400	270'	4,600	270'	4,900	310'	4,200						
260'	32.1	166.7	4,200	270'	4,600	280'	4,000	280'	4,300	320'	3,800						
310'	70'	78.2	311.8	101,500	150'	80'	80,000	130' + 40'	90'	72,700	130' + 50'	90'	63,000	130' + 90'	130'	31,000	
	80'	76.3	309.5	82,600		90'	72,700		100'	60,700		100'	62,000		130'	31,000	
	90'	74.4	306.8	68,700		100'	61,300		110'	51,700		110'	53,000		130'	31,000	
	100'	72.5	303.7	58,000		110'	52,300		120'	44,300		120'	45,600		140'	29,200	
	110'	70.5	300.3	49,500		120'	45,000		130'	38,200		130'	39,500		140'	29,200	
	120'	68.6	296.5	42,600		130'	39,100		140'	33,100		140'	34,000		160'	25,800	
	130'	66.6	292.3	36,900		140'	34,000		150'	28,800		150'	29,700		170'	22,700	
	140'	64.5	287.7	32,200		150'	29,500		160'	25,000		160'	25,900		190'	20,000	
	150'	62.4	282.7	28,100		160'	25,800		170'	21,700		170'	22,600		200'	17,600	
	Midpoint Location	160'	60.3	277.1		24,600	170'		22,500	180'		18,800	180'		19,700	210'	15,400
	170'	58.2	271.1	21,500		180'	19,700		190'	16,200		190'	17,100		230'	13,400	
	180'	56.0	264.5	18,800		190'	17,100		200'	13,900		200'	14,800		240'	11,600	
190'	53.7	257.4	16,400	200'	14,800	210'	11,900	210'	12,800	250'	10,000						
Midpoint Sag 17"	210'	51.4	249.7	14,300	210'	12,800	220'	10,300	220'	10,500	260'	8,400					
210'	48.9	241.2	12,300	220'	11,000	230'	9,100	230'	9,600	270'	7,000						
220'	46.4	232.0	10,600	230'	9,200	240'	7,500	240'	8,000	280'	6,300						
230'	43.8	221.9	9,200	240'	7,500	250'	6,300	250'	6,700	290'	5,600						
240'	41.0	210.8	8,000	250'	6,300	260'	5,400	260'	5,700	300'	5,000						
250'	38.1	198.6	7,000	260'	5,400	270'	4,600	270'	4,900	310'	4,500						
260'	35.0	185.0	6,200	270'	4,600	280'	4,000	280'	4,300	320'	4,100						

THIS CHART IS BASED UPON:

- Capacities marked by * are based upon structural limitations of the machine; all others do not exceed 85% of tipping in the least stable direction.
- When the machine is equipped with standard outriggers and front auxiliary outriggers, full 360° rotation of the crane is permitted. However, when operating the crane in the front sector, the load radius shall not be less than 35'. (Refer to diagram below.)
- Machine to be leveled on a firm solid support; shock and side loads are to be prevented.
- When lifting a load, the outriggers must be fully extended horizontally, the outrigger flairs down, and all tires free of the ground.
- All hook blocks, lifting tackle and job attachments are considered a part of the load to be lifted.
- Exceeding these loads or altering the counterweights nullifies all warranties.
- Crane must be in fully raised position when handling booms or boom plus job combinations.
- When the machine is equipped with standard outriggers, over the side is the least stable direction.
- Load ratings shown on this chart make no allowance for such factors as the effect of side loads, wind, ground condition, and operating speeds. The operator therefore shall reduce loads in order to take these factors into account.



Capacities Per S.A.E. Code J-765
 Class Designation Per U.S. Dept. of Commerce Standards.

L = Booms Length
 R = Load Radius from Centerline of Rotation
 H = Height of Boom Point Above Ground
 A = Boom Angle Above Horizontal

TUBULAR BOOM
272 METRIC TON CLASS 5.5 - 1284

CRANE CAPACITY CHART
OVER SIDE AND OVER REAR
ON STANDARD OUTRIGGERS

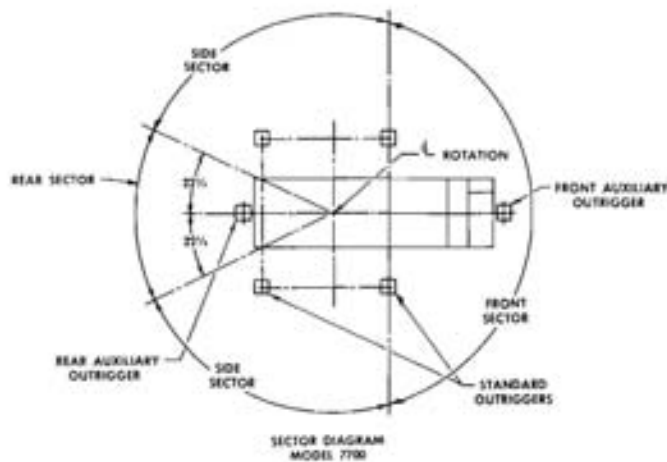
BOOM				CAPACITY	BOOM				CAPACITY	BOOM				CAPACITY	BOOM				CAPACITY
L	R	A	H		L	R	A	H		L	R	A	H		L	R	A	H	
21.3M	5.5	81.0	23.5	*172,100	45.7M	10.7	79.2	47.4	*135,900	84.0M	13.7	79.6	65.4	*91,400	79.2M	18.3	78.2	80.0	58,500
	6	79.6	23.4	*158,900		12	77.5	47.1	111,500		15	78.4	65.1	79,600		20	76.9	79.6	51,500
	8	74.1	22.9	*208,900		14	74.9	46.6	88,800		18	75.6	64.4	60,300		23	74.7	78.9	41,200
	9	71.2	22.6	*181,400		17	71.0	45.6	66,000		21	72.8	63.5	47,800		26	72.4	77.9	34,100
	11	65.4	21.7	132,300		20	66.9	44.4	52,300		24	70.0	62.5	39,100		29	70.1	76.9	28,700
	13	59.2	20.6	100,300		23	62.8	42.9	42,500		27	67.1	61.1	32,700		32	67.8	75.7	24,500
	15	52.6	19.1	80,200		26	58.4	41.2	35,500		30	64.1	59.9	27,200		35	65.4	74.4	21,000
	18	41.2	16.1	61,100		29	53.8	39.1	30,200		33	61.1	58.3	23,800		38	63.0	72.9	18,200
	21	25.9	11.3	49,000		32	49.0	36.7	26,300		36	58.0	56.5	20,700		41	60.5	71.3	15,900
	23.3	23.6	10.5	47,900		35	43.7	33.7	22,700		39	54.7	54.5	18,500		44	58.0	69.5	13,900
24.4M	7.6	77.0	26.2	*177,700	48.8M	10.7	79.9	50.5	*130,200	87.1M	15.2	78.7	68.2	77,600	82.3M	18.3	78.6	81.1	58,400
	9	73.7	25.8	*181,500		12	78.3	50.2	113,200		17	77.2	67.8	68,800		20	77.4	82.8	51,000
	11	68.6	25.0	132,200		14	75.9	49.7	88,700		20	74.5	67.0	51,300		23	75.3	82.0	41,500
	13	63.4	24.1	100,000		17	72.2	48.8	66,000		23	71.8	66.1	41,600		26	73.1	81.1	34,000
	15	58.0	22.9	80,100		20	68.6	46.4	52,500		26	69.1	65.0	34,600		29	70.9	80.1	28,600
	18	49.0	20.6	61,100		23	64.6	44.9	45,900		29	66.3	63.7	29,200		32	68.7	79.0	24,400
	21	38.5	17.3	48,900		26	60.6	42.9	40,300		32	62.3	61.7	25,000		35	66.4	77.7	21,000
27.4M	9	78.5	29.3	*177,400	51.8M	12.2	78.8	53.3	*109,100	92.5M	17.2	77.2	71.3	77,600	85.3M	20	77.9	86.3	58,200
	11	71.1	28.3	132,200		14	76.8	52.9	88,700		20	74.5	67.0	60,300		23	75.8	85.2	41,500
	13	66.6	27.5	100,000		17	73.3	52.0	65,900		23	71.8	66.1	46,600		26	73.1	84.1	34,000
	15	61.9	26.5	80,100		20	69.8	51.0	51,600		26	69.1	65.0	34,600		29	70.9	83.1	28,600
	18	54.4	24.5	61,000		23	66.2	49.7	42,100		29	66.3	63.7	29,200		32	68.7	82.0	24,400
	21	46.1	21.9	48,800		26	62.5	48.2	35,300		32	62.3	61.7	25,000		35	66.4	80.1	21,000
	24	36.3	18.3	40,400		29	58.7	46.5	29,800		35	57.6	58.8	21,600		38	64.1	78.3	18,200
	27	23.1	12.8	34,100		32	54.7	44.5	25,600		41	54.5	56.8	18,500		41	61.7	74.8	15,900
	27.4	20.6	11.6	33,300		35	50.4	42.1	22,200		44	51.2	54.5	16,500		44	59.3	73.1	13,900
	30.5	19.4	12.1	28,600		38	45.9	39.4	19,500		47	47.8	51.9	14,900		47	56.8	71.2	12,200
30.5M	7.6	79.7	32.4	*177,400	54.9M	14	76.8	52.9	88,700	97.1M	20	75.2	70.2	70,200	88.8M	23	75.8	85.2	41,500
	9	77.0	32.1	*181,500		17	73.3	52.0	65,900		23	72.7	69.3	41,400		26	73.7	84.3	34,000
	11	73.1	31.5	132,100		20	69.8	51.0	51,600		26	70.1	68.3	34,600		29	71.6	83.3	28,600
	13	69.1	30.8	99,900		23	66.2	49.7	42,100		29	66.3	63.7	29,200		32	68.7	82.0	24,400
	15	65.0	29.9	80,000		26	62.5	48.2	35,300		32	62.3	61.7	25,000		35	66.4	80.1	21,000
	18	58.5	28.2	61,000		29	58.7	46.5	29,800		35	57.6	58.8	21,600		38	64.1	78.3	18,200
	21	51.5	26.0	48,800		32	54.7	44.5	25,600		41	54.5	56.8	18,500		41	61.7	74.8	15,900
	24	43.7	23.2	40,300		35	50.4	42.1	22,200		44	47.8	51.9	16,500		44	59.3	73.1	13,900
	27	34.5	19.3	34,100		38	45.9	39.4	19,500		47	47.8	51.9	14,900		47	56.8	71.2	12,200
	30	22.1	13.5	29,300		41	41.1	36.1	17,200		47	47.8	51.9	14,900		47	56.8	71.2	12,200
33.5M	9.1	77.9	35.2	*177,100	57.9M	14	76.8	52.9	88,700	102.5M	20	75.2	70.2	70,200	92.5M	23	75.8	85.2	41,500
	11	74.7	34.7	132,100		17	73.3	52.0	65,900		23	72.7	69.3	41,400		26	73.7	84.3	34,000
	13	71.1	34.1	99,900		20	69.8	51.0	51,600		26	70.1	68.3	34,600		29	71.6	83.3	28,600
	15	67.4	33.3	80,000		23	66.2	49.7	42,100		29	66.3	63.7	29,200		32	68.7	82.0	24,400
	18	61.7	31.8	60,900		26	62.5	48.2	35,300		32	62.3	61.7	25,000		35	66.4	80.1	21,000
	21	55.6	29.9	48,700		29	58.7	46.5	29,800		35	57.6	58.8	21,600		38	64.1	78.3	18,200
	24	49.0	27.5	40,300		32	54.7	44.5	25,600		41	54.5	56.8	18,500		41	61.7	74.8	15,900
	27	41.6	24.4	34,000		35	50.4	42.1	22,200		44	47.8	51.9	16,500		44	59.3	73.1	13,900
	30	33.0	20.3	29,200		38	45.9	39.4	19,500		47	47.8	51.9	14,900		47	56.8	71.2	12,200
	33	21.3	14.1	25,300		41	41.1	36.1	17,200		47	47.8	51.9	14,900		47	56.8	71.2	12,200
36.6M	9.1	79.0	38.3	*176,400	61.0M	14	76.8	52.9	88,700	107.1M	20	75.2	70.2	70,200	97.1M	23	75.8	85.2	41,500
	11	76.0	37.9	132,100		17	73.3	52.0	65,900		23	72.7	69.3	41,400		26	73.7	84.3	34,000
	13	72.7	37.3	99,900		20	69.8	51.0	51,600		26	70.1	68.3	34,600		29	71.6	83.3	28,600
	15	69.4	36.4	79,900		23	66.2	49.7	42,100		29	66.3	63.7	29,200		32	68.7	82.0	24,400
	18	64.2	35.2	60,900		26	62.5	48.2	35,300		32	62.3	61.7	25,000		35	66.4	80.1	21,000
	21	58.8	33.5	48,700		29	58.7	46.5	29,800		35	57.6	58.8	21,600		38	64.1	78.3	18,200
	24	53.1	31.4	40,200		32	54.7	44.5	25,600		41	54.5	56.8	18,500		41	61.7	74.8	15,900
	27	46.8	28.8	34,000		35	50.4	42.1	22,200		44	47.8	51.9	16,500		44	59.3	73.1	13,900
	30	39.9	25.5	29,100		38	45.9	39.4	19,500		47	47.8	51.9	14,900		47	56.8	71.2	12,200
	33	31.6	21.2	25,300		41	41.1	36.1	17,200		47	47.8	51.9	14,900		47	56.8	71.2	12,200
39.6M	9.1	79.8	41.5	*175,000	64.0M	14	76.8	52.9	88,700	111.1M	20	75.2	70.2	70,200	102.5M	23	75.8	85.2	41,500
	11	77.1	41.0	132,100		17	73.3	52.0	65,900		23	72.7	69.3	41,400		26	73.7	84.3	34,000
	13	74.1	40.5	99,900		20	69.8	51.0	51,600		26	70.1	68.3	34,600		29	71.6	83.3	28,600
	15	71.0	39.8	79,900		23	66.2	49.7	42,100		29	66.3	63.7	29,200		32	68.7	82.0	24,400
	18	66.3	38.6	60,800		26	62.5	48.2	35,300		32	62.3	61.7	25,000		35	66.4	80.1	21,000
	21	61.5	37.1	48,700		29	58.7	46.5	29,800		35	57.6	58.8	21,600		38	64.1	78.3	18,200
	24	56.4	35.2	40,300		32	54.7	44.5	25,600		41	54.5	56.8	18,500		41	61.7	74.8	15,900
	27	50.9	32.9	33,800		35	50.4	42.1	22,200		44	47.8	51.9	16,500		44	59.3	73.1	13,900
	30	45.0	30.1	28,900		38	45.9	39.4	19,500		47	47.8	51.9	14,900		47	56.8	71.2	12,200
	33	38.3	26.6	25,100		41	41.1	36.1	17,200		47	47.8	51.9	14,900		47	56.8	71.2	12,200
42.7M	9.1	78.5	44.3	138,900	67.0M	14	76.8	52.9	88,700	115.1M	20	75.2	70.2	70,200	107.1M	23	75.8	85.2	41,500
	11	76.6	43.9	113,700		17													

MAXIMUM MAIN COUNTERWEIGHT — 38,550kg
 MAXIMUM BUMPER COUNTERWEIGHT — 9,790kg

BOOM				CAPACITIES BELOW APPLY TO JIBS — SEE JIB DATA														
L	R	A	H	CAPACITY	BOOM PLUS JIB			BOOM PLUS JIB			BOOM PLUS JIB			BOOM PLUS JIB				
					Length	Radius	CAPACITY	Length	Radius	CAPACITY	Length	Radius	CAPACITY	Length	Radius	CAPACITY		
91.4M	18.3	79.8	92.5	* 56,500	303.6M (91.4M + 12.2M)	24.4	* 36,200	309.7M (97.5M + 12.2M)	27.4	32,700	309.7M (97.5M + 12.2M)	27.4	* 28,500	315.8M (100.6M + 15.2M)	33.5	* 14,000		
	20	78.7	92.1	50,400		26	34,900		29	29,900		29	* 28,300		35	* 14,000		
	21	76.8	91.5	45,100		29	30,400		32	25,400		32	22,200		38	* 14,000		
	26	74.8	90.7	33,900		32	25,600		35	21,600		35	19,200		41	* 14,000		
	29	72.9	89.8	28,500		35	22,000		38	18,000		38	16,600		47	* 14,000		
	32	70.9	88.8	24,300		38	19,300		41	16,300		41	14,400		47	* 14,000		
	35	68.9	87.7	20,900		41	16,600		44	14,100		44	12,600		50	12,600		
	38	66.8	86.4	18,000		44	14,500		47	12,400		47	12,600		53	11,300		
	41	64.8	85.0	15,700		47	12,700		50	10,900		50	11,000		56	9,800		
	Midpoint	44	62.7	83.5		13,800	Midpoint		47	12,700		Midpoint	53		9,500	Midpoint	59	8,600
	Location	47	60.5	81.9		12,000	Location		50	11,700		Location	56		8,300	Location	62	7,600
	48.8M	50	58.3	80.1		10,600	48.8M		53	9,700		48.8M	56		8,700	48.8M	59	7,900
	53	56.1	78.1	9,900		56	8,500		59	7,000		59	7,200		65	6,600		
	Midpoint	56	53.8	76.0		8,300	Midpoint		59	7,400		Midpoint	62		6,200	Midpoint	68	5,800
	Sag	59	51.4	73.7		7,100	Sag		62	6,400		Sag	65		5,300	Sag	71	5,000
43.2cm	62	48.9	71.2	6,200	43.2cm	65	5,500	43.2cm	68	4,400	43.2cm	74	4,300					
65	46.4	68.4	5,300	68	4,700	71	3,500	71	3,600	77	3,600							
68	43.7	65.4	* 4,600	71	3,900	74	2,800	74	2,800	79.2	2,300							
71	40.9	62.0	* 3,700	74	3,200	77	2,500	77	2,500									
74	37.9	58.3	* 2,900	77	2,500	79.2	2,000											
77	34.7	54.2	* 2,200															
79.2	32.1	50.7	* 1,900															
94.5M	21.3	78.2	95.0	46,000	306.7M (94.5M + 12.2M)	24.4	* 36,200	312.8M (100.6M + 12.2M)	27.4	32,700	312.8M (97.5M + 21.3M)	27.4	* 28,500	318.9M (94.5M + 30.5M)	33.5	* 12,200		
	23	77.2	94.6	41,000		26	34,900		29	29,800		29	* 28,300		35	* 12,200		
	26	75.3	93.8	33,800		29	30,300		32	25,300		32	* 28,300		38	* 12,200		
	29	73.4	93.0	28,500		32	25,600		35	21,700		35	* 28,300		41	* 12,200		
	32	71.5	92.0	24,200		35	22,000		38	18,700		38	* 28,300		44	* 12,200		
	35	69.6	90.9	20,800		38	19,000		41	16,700		41	15,300		47	* 12,200		
	38	67.6	89.7	18,000		41	16,600		44	14,700		44	13,400		50	12,100		
	41	65.6	88.4	15,700		44	14,400		47	12,300		47	11,700		53	11,200		
	Midpoint	44	63.6	87.0		13,700	Midpoint		47	12,600		Midpoint	50		11,300	Midpoint	56	9,800
	Location	47	61.6	85.4		12,000	Location		50	11,000		Location	53		10,300	Location	59	8,800
	48.8M	50	59.5	83.7		10,500	48.8M		53	9,600		48.8M	56		9,000	48.8M	59	8,200
	53	57.3	81.8	9,200		56	8,400		59	7,000		59	7,200		65	6,700		
	Midpoint	56	55.1	79.8		8,100	Midpoint		59	7,300		Midpoint	62		6,800	Midpoint	68	6,300
	Sag	59	52.9	77.6		7,000	Sag		62	6,300		Sag	65		5,900	Sag	71	5,300
	43.2cm	62	50.5	75.2		6,100	43.2cm		65	5,500		43.2cm	68		4,200	43.2cm	74	4,400
65	48.1	72.6	5,300	68	4,700	71	3,900	71	3,400	77	2,800							
68	45.6	69.7	* 4,500	71	3,900	74	2,600	74	2,600	79.2	2,300							
71	43.0	66.6	* 3,700	74	3,100	77	2,400	77	2,400									
74	40.2	63.2	* 2,800	77	2,400	79.2	2,000											
77	37.3	59.4	* 2,200															
79.2	35.0	56.3	* 1,800															
97.5M	21.3	78.6	98.1	* 45,300	309.7M (97.5M + 12.2M)	24.4	* 36,200	315.8M (100.6M + 12.2M)	27.4	32,700	315.8M (97.5M + 21.3M)	27.4	* 28,500	321.9M (94.5M + 27.4M)	33.5	* 12,200		
	23	77.6	97.7	40,800		26	34,900		29	29,800		29	* 28,300		35	* 12,200		
	26	75.8	97.0	33,800		29	30,300		32	25,300		32	* 28,300		38	* 12,200		
	29	74.0	96.2	28,400		32	25,600		35	21,700		35	* 28,300		41	* 12,200		
	32	72.1	95.2	24,200		35	22,000		38	18,700		38	* 28,300		44	* 12,200		
	35	70.2	94.2	20,800		38	19,000		41	16,700		41	15,300		47	* 12,200		
	38	68.4	93.0	18,000		41	16,600		44	14,700		44	13,400		50	12,100		
	41	66.4	91.8	15,600		44	14,400		47	12,300		47	11,700		53	11,200		
	Midpoint	44	64.5	90.4		13,600	Midpoint		47	12,600		Midpoint	50		11,300	Midpoint	56	9,800
	Location	47	62.5	88.9		11,900	Location		50	11,000		Location	53		10,300	Location	59	8,800
	48.8M	50	60.5	87.2		10,400	48.8M		53	9,600		48.8M	56		9,000	48.8M	59	8,200
	53	58.5	85.4	9,100		56	8,400		59	7,000		59	7,200		65	6,700		
	Midpoint	56	56.4	83.5		7,900	Midpoint		59	7,300		Midpoint	62		6,800	Midpoint	68	6,300
	Sag	59	54.2	81.4		6,900	Sag		62	6,300		Sag	65		5,900	Sag	71	5,300
	43.2cm	62	52.0	79.1		6,000	43.2cm		65	5,500		43.2cm	68		4,200	43.2cm	74	4,400
65	49.7	76.6	5,200	68	4,700	71	3,900	71	3,400	77	2,800							
68	47.4	73.9	4,400	71	44.9	71.0	3,600	74	42.3	67.8	* 2,800							
71	44.9	71.0	3,600	74	42.3	67.8	* 2,800	77	39.6	64.3	* 2,100							
74	42.3	67.8	* 2,800	77	37.3	64.3	* 2,100	79.2	35.0	61.5	* 1,800							
77	39.6	64.3	* 2,100															
79.2	37.3	61.5	* 1,800															
100.6M	21.3	78.9	101.2	* 44,000	312.8M (100.6M + 12.2M)	24.4	* 36,200	318.9M (100.6M + 12.2M)	27.4	32,700	318.9M (97.5M + 21.3M)	27.4	* 28,500	325.0M (94.5M + 30.5M)	33.5	* 12,200		
	23	78.0	100.8	* 40,400		26	34,900		29	29,800		29	* 28,300		35	* 12,200		
	26	76.2	100.1	33,800		29	30,300		32	25,300		32	* 28,300		38	* 12,200		
	29	74.5	99.3	28,500		32	25,600		35	21,700		35	* 28,300		41	* 12,200		
	32	72.7	98.4	24,200		35	22,000		38	18,700		38	* 28,300		44	* 12,200		
	35	70.9	97.4	20,800		38	19,000		41	16,700		41	15,300		47	* 12,200		
	38	69.0	96.3	18,000		41	16,600		44	14,700		44	13,400		50	12,100		
	41	67.2	95.1	15,700		44	14,400		47	12,300		47	11,700		53	11,200		
	Midpoint	44	65.3	93.7		13,400	Midpoint		47	12,600		Midpoint	50		11,300	Midpoint	56	9,800
	Location	47	63.4	92.3		11,700	Location		50	11,000		Location	53		10,300	Location	59	8,800
	48.8M	50	61.5	90.7		10,200	48.8M		53	9,600		48.8M	56		9,000	48.8M	59	8,200
	53	59.5	89.0	8,900		56	8,400		59	7,000		59	7,200		65	6,700		
	Midpoint	56	57.5	87.1		7,800	Midpoint		59	7,300		Midpoint	62		6,800	Midpoint	68	6,300
	Sag	59	55.5	85.1		6,800	Sag		62	6,300		Sag	65		5,900	Sag	71	5,300
	43.2cm	62	53.4	82.9		5,800	43.2cm		65	5,500		43.2cm	68		4,200	43.2cm	74	4,400
65	51.2	80.6	5,000	68	48.9	78.1	4,200	71	46.6	75.3	3,400							
68	48.9	78.1	3,400	74	44.2	72.3	2,700	77	41.7	69.1	* 2,000							
71	46.6	75.3	2,700	77	41.7	69.1	* 2,000	79.2	39.7	66.4	* 1,600							
74	44.2	72.3	2,700															
77	41.7	69.1	* 2,000															
79.2	39.7	66.4	* 1,600															

This Chart is Based Upon:

- Capacities marked by * are based upon structural limitations of the machine; all others do not exceed 85% of tipping in the least stable direction.
- When the machine is equipped with standard outriggers and front auxiliary outriggers, full 360° rotation of the crane is permitted. However, when operating the crane in the front sector, the load radius shall not be less than 10.6 (Refer to diagram below.)
- Machine to be leveled on a firm solid support, shock and side loads are to be prevented.
- When lifting a load, the outriggers must be fully extended horizontally, the outrigger floats down, and all tires free of the ground.
- All hook blocks, lifting tackle and jib attachments are considered a part of the load to be lifted.
- Exceeding these loads or altering the counterweight nullifies all warranties.
- Gantry must be in fully raised position when handling booms or boom plus jib combinations.
- When the machine is equipped with standard outriggers, over the side is the least stable direction.
- Load ratings shown on this chart make no allowance for such factors as the effect of side loads, wind, ground conditions, and operating speeds. The operator therefore shall reduce loads in order to take these factors into account.



Capacities Per S.A.E. Code J-765
 Class Designation Per U.S. Dept. of Commerce Standards

- L = Boom Length (in Meters)
- R = Load Radius From Center

TUBULAR BOOM
300 TON CLASS 18-2831

CRANE LIFTING CAPACITIES
MACHINE EQUIPPED WITH STANDARD OUTRIGGERS, AUXILIARY
OUTRIGGERS (SIDE, FRONT, AND REAR), AND BUMPER COUNTERWEIGHT

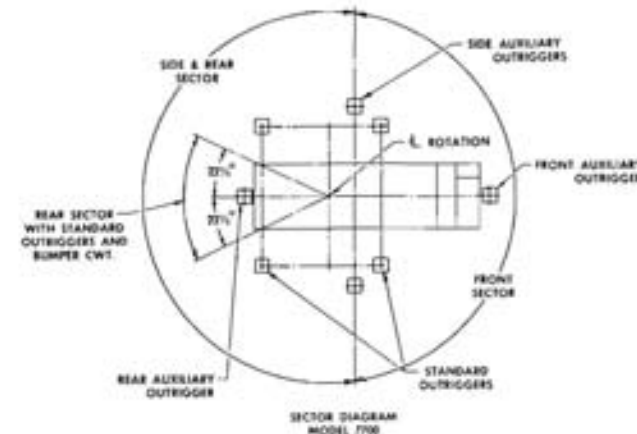
BOOM					CAPACITY	BOOM					CAPACITY	BOOM					CAPACITY		
L	R	A	H	L		R	A	H	L	R		A	H	L	R	A		H	
70'	18'	81.0	77.5	1600,000	150'	35'	79.2	155.6	299,800	230'	45'	79.6	274.8	201,800	260'	60'	78.2	262.8	131,400
	20'	79.4	77.1	1517,700		40'	77.3	154.5	255,200		50'	78.2	213.8	173,200		70'	75.9	260.4	907,800
	25'	75.1	75.8	1480,200		45'	75.3	153.2	223,000		60'	75.4	211.1	133,900		80'	73.6	257.6	89,500
	30'	70.8	74.1	1391,000		50'	73.3	151.8	194,100		70'	72.5	208.4	108,300		90'	71.3	254.4	76,100
	35'	66.4	71.9	128,900		60'	69.3	148.2	154,300		80'	69.6	204.8	90,000		100'	69.0	250.7	65,700
	40'	61.7	69.3	123,300		70'	65.1	143.8	125,000		90'	66.7	200.7	76,600		110'	66.6	246.5	57,300
	45'	56.9	66.1	1244,600		80'	60.8	138.5	102,600		100'	63.7	196.0	66,200		120'	64.2	241.9	50,300
	50'	51.7	62.3	1209,000		90'	56.3	132.2	86,700		110'	60.5	190.1	57,800		130'	61.7	236.6	44,600
	60'	40.0	52.0	119,000		100'	51.5	124.7	73,500		120'	57.3	184.4	50,800		140'	59.1	230.9	39,100
	70'	23.6	34.7	125,800		110'	46.4	115.8	63,600		130'	54.0	177.4	45,100		150'	56.5	224.5	34,000
80'	25'	77.0	86.1	1480,100	120'	40.7	105.0	55,600	140'	50.5	169.3	40,200	160'	53.8	217.4	29,600			
	30'	73.3	84.7	1390,900	130'	34.3	91.6	49,300	150'	46.9	160.6	36,000	170'	51.0	209.6	25,700			
	35'	69.5	82.9	128,300	140'	26.6	74.0	43,600	160'	43.0	150.4	32,400	180'	48.1	201.0	22,200			
	40'	65.6	80.6	1262,900	150'	15.6	47.1	39,000	170'	38.8	138.6	29,000	190'	45.0	191.4	19,100			
	45'	61.5	78.0	1244,500	160'	35'	79.9	165.8	287,250	180'	54.1	124.8	25,900	200'	41.8	180.6	16,300		
	50'	57.3	74.8	1208,900		40'	78.1	164.8	247,500	190'	28.8	108.1	21,200	210'	38.4	168.6	13,700		
	60'	48.1	66.8	1158,900		45'	76.3	163.6	216,000	200'	22.3	86.6	20,800	220'	34.6	154.9	11,400		
	70'	37.2	55.3	1125,700		50'	74.4	162.2	190,600	210'	13.1	54.2	18,600	230'	30.5	139.0	9,300		
	80'	21.9	36.6	1031,300		60'	70.6	158.9	152,400	220'	7.7	224.0	171,300	240'	25.7	119.9	7,300		
	90'	25'	78.5	96.4		1479,400	70'	66.8	154.9	124,900	230'	6.0	221.7	133,800	250'	20.0	95.2	5,800	
30'		75.2	95.1	1390,800		80'	62.8	150.0	102,500	240'	70.6	215.5	89,900	260'	11.7	39.4	4,600		
35'		71.9	93.5	1325,000		90'	58.6	144.2	85,900	250'	67.8	211.6	76,500	60'	78.6	271.0	133,000		
40'		68.5	91.6	1278,700		100'	54.3	137.4	73,300	260'	64.9	207.1	66,500	70'	76.5	270.2	107,700		
45'		65.0	89.3	1242,300		110'	49.7	129.4	63,400	270'	62.0	202.0	57,700	80'	74.3	268.0	89,400		
50'		61.3	86.6	1206,000	120'	44.8	119.9	55,400	280'	59.0	196.2	50,700	90'	72.0	264.9	76,000			
60'		53.7	79.9	1158,600	130'	39.4	108.6	48,900	290'	55.9	189.7	45,000	100'	69.8	261.4	65,600			
70'		45.1	70.9	1125,600	140'	33.2	94.6	43,200	300'	52.7	182.4	40,300	110'	67.5	257.4	57,200			
80'		34.9	58.5	1033,200	150'	25.7	76.3	37,800	310'	49.3	174.1	35,700	120'	65.2	253.0	50,200			
90'		20.6	38.2	96,800	160'	15.1	48.4	33,000	320'	45.7	164.8	31,900	130'	62.8	248.0	44,500			
100'	25'	79.7	106.7	1479,300	170'	18.8	51.9	29,600	330'	41.9	154.2	28,500	140'	60.4	242.5	39,000			
	30'	76.7	105.5	1390,700	180'	17.8	50.2	28,000	340'	37.8	142.0	25,500	150'	57.7	236.4	34,500			
	35'	73.7	104.1	1321,300	190'	13.3	42.7	22,900	350'	35.4	137.7	22,900	160'	55.4	229.7	29,500			
	40'	70.7	102.4	1273,600	200'	11.1	37.0	20,500	360'	32.1	127.7	20,500	170'	52.7	222.4	25,600			
	45'	67.6	100.3	1237,800	210'	9.8	33.5	18,400	370'	28.1	110.5	18,400	180'	50.0	214.3	22,100			
	50'	64.5	98.0	1208,700	220'	8.8	30.8	16,400	380'	24.8	98.5	16,400	190'	47.1	205.1	19,000			
	60'	57.8	92.2	1158,700	230'	7.8	28.2	14,500	390'	21.8	88.5	14,500	200'	44.2	195.4	16,200			
	70'	50.7	84.7	1125,500	240'	7.0	26.1	12,700	400'	19.8	80.2	12,700	210'	41.0	184.4	13,600			
	80'	42.6	74.8	1033,100	250'	6.4	24.5	11,100	410'	17.8	74.2	11,100	220'	37.6	172.0	11,300			
	90'	33.0	61.4	96,700	260'	5.9	23.1	9,700	420'	16.1	68.1	9,700	230'	33.9	157.9	9,200			
100'	19.4	40.0	74,500	270'	5.5	21.9	8,500	430'	14.6	62.4	8,500	240'	29.9	141.6	7,200				
110'	30'	77.9	113.8	1390,600	280'	5.1	20.8	7,500	440'	13.1	57.4	7,500	250'	25.2	122.1	5,700			
	35'	75.1	114.5	1321,200	290'	4.8	19.8	6,600	450'	11.7	52.7	6,600	260'	19.6	97.4	4,500			
	40'	72.5	112.9	1272,400	300'	4.5	18.9	5,800	460'	10.5	48.3	5,800	60'	79.0	283.2	130,600			
	45'	69.8	111.1	1235,800	310'	4.2	18.1	5,100	470'	9.5	44.4	5,100	70'	76.9	281.0	107,600			
	50'	66.9	109.0	1200,300	320'	4.0	17.4	4,500	480'	8.6	40.7	4,500	80'	74.8	278.4	89,300			
	60'	61.1	103.9	1158,600	330'	3.8	16.8	4,000	490'	7.8	37.4	4,000	90'	72.7	275.5	75,900			
	70'	54.9	97.4	1125,400	340'	3.6	16.3	3,600	500'	7.1	34.4	3,600	100'	70.5	272.1	65,500			
	80'	48.1	89.1	1033,000	350'	3.4	15.9	3,200	510'	6.5	31.7	3,200	110'	68.3	268.2	57,100			
	90'	40.5	78.5	96,600	360'	3.3	15.6	2,900	520'	6.0	29.4	2,900	120'	66.1	264.0	50,100			
	100'	31.4	64.1	74,200	370'	3.2	15.4	2,600	530'	5.6	27.4	2,600	130'	63.9	259.2	44,400			
110'	18.5	41.5	64,400	380'	3.1	15.2	2,300	540'	5.2	25.7	2,300	140'	61.5	254.0	38,900				
120'	30'	79.0	126.0	1389,000	390'	3.0	15.0	2,100	550'	4.9	24.3	2,100	150'	59.2	248.2	33,800			
	35'	76.5	124.8	1319,200	400'	2.9	14.8	1,900	560'	4.6	23.1	1,900	160'	56.8	241.9	29,400			
	40'	74.0	123.4	1270,100	410'	2.8	14.6	1,700	570'	4.4	22.1	1,700	170'	54.3	234.9	25,500			
	45'	71.5	121.8	1233,200	420'	2.7	14.4	1,500	580'	4.2	21.2	1,500	180'	51.7	227.2	22,000			
	50'	69.0	119.9	1204,600	430'	2.6	14.2	1,300	590'	4.0	20.4	1,300	190'	49.0	218.8	18,900			
	60'	61.7	115.3	1158,500	440'	2.5	14.0	1,100	600'	3.8	19.7	1,100	200'	46.2	209.6	16,100			
	70'	54.2	109.5	1125,300	450'	2.4	13.8	1,000	610'	3.6	19.1	1,000	210'	43.3	199.4	13,500			
	80'	52.3	102.3	1029,900	460'	2.3	13.6	900	620'	3.5	18.6	900	220'	40.2	188.0	11,200			
	90'	45.9	93.4	96,500	470'	2.2	13.4	800	630'	3.4	18.1	800	230'	36.9	175.3	9,100			
	100'	38.7	82.0	74,100	480'	2.1	13.2	700	640'	3.3	17.7	700	240'	33.3	160.9	7,300			
110'	30.0	66.8	64,300	490'	2.0	13.0	600	650'	3.2	17.3	600	250'	29.3	144.2	5,800				
120'	17.6	43.0	36,400	500'	1.9	12.8	500	660'	3.1	16.9	500	260'	24.8	124.3	4,400				
130'	30'	79.8	136.2	1386,000	510'	1.8	12.6	400	670'	3.0	16.6	400	60'	79.4	293.4	127,800			
	35'	77.6	135.1	1315,400	520'	1.7	12.4	350	680'	2.9	16.3	350	70'	77.4	291.3	107,500			
	40'	75.3	133.8	1266,500	530'	1.6	12.2	300	690'	2.8	16.0	300	80'	75.4	288.8	89,200			
	45'	73.0	132.3	1229,800	540'	1.5	12.0	250	700'	2.7	15.7	250	90'	73.3	285.9	75,800			
	50'	70.7	130.6	1201,300	550'	1.4	11.8	200	710'	2.6	15.4	200	100'	71.2	282.7	65,400			
	60'	65.9	126.4	1158,300	560'	1.3	11.6	150	720'	2.5	15.1	150	110'	69.1	279.0	57,000			
	70'	60.9	121.2	1125,200	570'	1.2	11.4												

BOOM				CAPACITY	Capacities Below Apply to Jibs - See Jib Data															
L	R	A	H		BOOM PLUS JIB		CAPACITY		BOOM PLUS JIB		CAPACITY		BOOM PLUS JIB		CAPACITY					
				Length	Radius	Length	Radius	Length	Radius	Length	Radius	Length	Radius	Length	Radius					
300'	40'	79.8	303.4'	*124,800	340' (300' + 40')	80'	*80,000	90'	72,200	100'	64,800	110'	57,600	120'	50,400	130'	43,200			
	70'	77.8	301.5'	*105,500		90'	72,800	100'	60,800	110'	51,800	120'	45,400	130'	39,200	140'	33,000			
	80'	75.9	299.1'	85,300		110'	52,400	120'	44,500	130'	38,400	140'	31,500	150'	28,900	160'	25,700			
	90'	73.9	296.4'	75,700		120'	45,300	(130' + 40')	39,300	140'	33,300	(130' + 50')	28,900	150'	25,500	160'	22,300	170'	19,000	
	100'	71.9	293.2'	65,300		130'	39,300	140'	33,000	150'	28,900	160'	25,700	170'	22,300	180'	19,000	190'	15,400	
	110'	69.9	289.7'	56,900		140'	34,000	150'	29,700	160'	25,700	170'	22,300	180'	19,000	190'	15,400	200'	12,000	
	120'	67.8	285.7'	49,900		150'	29,700	160'	25,700	170'	22,300	180'	19,000	190'	15,400	200'	12,000	210'	9,000	
	130'	65.7	281.4'	*44,200		160'	25,700	170'	22,300	180'	19,000	190'	15,400	200'	12,000	210'	9,000	220'	6,400	
	140'	63.6	276.6'	*38,700		170'	22,300	180'	19,000	190'	15,400	200'	12,000	210'	9,000	220'	6,400	230'	4,800	
	150'	61.4	271.3'	*33,600		180'	19,000	190'	15,400	200'	12,000	210'	9,000	220'	6,400	230'	4,800	240'	3,600	
	Midpoint Location 160'	59.2	265.5'	*29,200		190'	17,200	200'	15,000	210'	12,800	220'	11,000	230'	9,200	240'	7,500	250'	5,900	
	170'	57.0	259.2'	*25,300		200'	15,000	210'	12,800	220'	11,000	230'	9,200	240'	7,500	250'	5,900	260'	4,600	
	180'	54.7	252.3'	*21,800		210'	12,800	220'	11,000	230'	9,200	240'	7,500	250'	5,900	260'	4,600			
	Midpoint Sag 17"	790	52.3	244.8'		*18,700	220'	11,000	230'	9,200	240'	7,500	250'	5,900	260'	4,600				
	200'	49.8	236.6'	*15,900		230'	9,200	240'	7,500	250'	5,900	260'	4,600							
210'	47.2	227.7'	*13,300	240'	7,500	250'	5,900	260'	4,600											
220'	44.6	217.9'	*11,000	250'	5,900	260'	4,600													
230'	41.8	207.1'	*8,900																	
240'	38.8	195.2'	*6,900																	
250'	35.6	181.8'	*5,400																	
260'	32.1	166.7'	*4,200																	

330'	70'	78.2	311.8'	*102,800	350' (330' + 40')	80'	*80,000	90'	72,700	100'	64,700	110'	56,700	120'	48,700	130'	40,700	
	80'	76.3	309.5'	*87,900		90'	72,700	100'	60,700	110'	51,700	120'	45,700	130'	39,700	140'	33,700	
	90'	74.4	306.8'	75,600		110'	52,300	120'	44,300	130'	38,300	140'	31,300	150'	28,700	160'	25,700	
	100'	72.5	303.7'	65,200		120'	45,300	130'	38,300	140'	31,300	150'	28,700	160'	25,700	170'	22,300	
	110'	70.5	300.3'	56,800		130'	39,300	140'	33,000	150'	28,900	160'	25,700	170'	22,300	180'	19,000	
	120'	68.6	296.5'	49,800		140'	34,000	150'	29,700	160'	25,700	170'	22,300	180'	19,000	190'	15,400	
	130'	66.6	292.3'	44,300		150'	29,700	160'	25,700	170'	22,300	180'	19,000	190'	15,400	200'	12,000	
	140'	64.5	287.7'	*38,600		160'	25,700	170'	22,300	180'	19,000	190'	15,400	200'	12,000	210'	9,000	
	150'	62.4	282.7'	*33,500		170'	22,300	180'	19,000	190'	15,400	200'	12,000	210'	9,000	220'	6,400	
	Midpoint Location 160'	60.3	277.1'	*29,100		180'	19,000	190'	15,400	200'	12,000	210'	9,000	220'	6,400	230'	4,800	
	170'	58.2	271.1'	*25,200		190'	17,200	200'	15,000	210'	12,800	220'	11,000	230'	9,200	240'	7,500	
	180'	56.0	264.5'	*21,700		200'	15,000	210'	12,800	220'	11,000	230'	9,200	240'	7,500	250'	5,900	
	190'	53.7	257.4'	*18,600		210'	12,800	220'	11,000	230'	9,200	240'	7,500	250'	5,900	260'	4,600	
	Midpoint Sag 17"	200	51.4	249.7'		*15,800	220'	11,000	230'	9,200	240'	7,500	250'	5,900	260'	4,600		
	210'	48.9	241.2'	*13,200		230'	9,200	240'	7,500	250'	5,900	260'	4,600					
220'	46.4	232.0'	*10,900	240'	7,500	250'	5,900	260'	4,600									
230'	43.8	221.9'	*8,800	250'	5,900	260'	4,600											
240'	41.0	210.8'	*6,800															
250'	38.1	198.6'	*5,300															
260'	35.0	185.0'	*4,100															

THIS CHART IS BASED UPON:

- Capacities marked by * are based upon structural limitations of the machine; all others do not exceed 85% of tipping in the least stable direction.
- When the machine is equipped with standard outriggers, auxiliary outriggers (side, front, and rear), and bumper counterweight, full 360° operation of the crane is permitted. However, when operating the crane in the front sector, the load radius shall not be less than 15'. (Refer to diagram below.)
- When the machine is equipped with standard outriggers only and bumper counterweight, operation directly over the rear of the carrier 22 1/2° to either side of centerline of the carrier is permitted. (As defined in diagram below.)
- Machine to be leveled on a firm solid support; shock and side loads are to be prevented.
- When lifting a load, the outriggers must be fully extended horizontally, the outrigger floats down, and all tires are off the ground.
- All hook blocks, lifting tackle and jib attachments are considered a part of the load to be lifted.
- Exceeding these loads or altering the counterweight nullifies all warranties.
- Crane must be in fully raised position when handling booms or boom plus jib combinations.
- When the machine is equipped with standard and auxiliary outriggers (side, front, and rear), the sector between the side auxiliary outrigger and the front standard outrigger is the least stable direction.
- Load ratings shown on this chart make no allowance for such factors as the effect of side loads, wind, ground conditions, and operating speeds. The operator therefore shall reduce load ratings to take these factors into account.



Capacities Per S.A.E. Code J-765
 Class Designation Per U.S. Dept. of Commerce Standards.

L = Boom Length
 R = Load Radius From Centerline of Rotation
 H = Height of Boom Point Shaft Above Ground
 A = Boom Angle Above Horizontal.

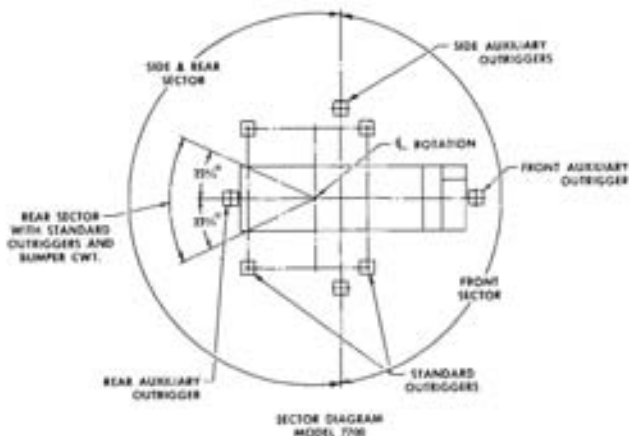
BOOM				CAPACITY	BOOM				CAPACITY	BOOM				CAPACITY	BOOM				CAPACITY		
L	R	A	H		L	R	A	H		L	R	A	H		L	R	A	H			
21.3M	5.5	81.0	23.6	*272,160	45.7M	10.7	79.2	47.4	*135,990	64.0M	11.7	79.6	65.4	* 91,530	79.2M	16.3	78.2	80.0	* 60,510		
	6	79.6	23.5	*240,700		11	78.8	47.3	*131,580		15	78.4	65.2	* 80,600		20	76.9	79.6	* 53,510		
	8	74.1	22.9	*207,720		12	77.5	47.1	*118,300		18	75.6	64.4	* 62,420		23	74.7	78.9	* 44,020		
	9	71.2	22.6	*181,170		13	76.2	46.9	*107,530		21	72.0	63.6	* 50,400		26	72.4	77.9	* 37,150		
	11	65.4	21.7	*144,660		14	74.9	46.6	*97,960		24	70.0	62.5	* 41,860		29	70.1	76.9	* 31,950		
	13	59.2	20.6	*119,150		15	73.6	46.3	*89,960		27	67.1	61.3	* 35,670		32	67.8	75.7	* 27,800		
	15	52.6	19.1	* 97,340		18	69.7	45.2	*71,690		30	64.1	59.9	* 30,770		35	65.4	74.4	* 24,380		
	18	41.2	16.2	* 74,260		21	65.6	44.0	* 58,160		Location	33	61.1	58.3		* 26,880	38	63.0	72.9	* 21,560	
	21	25.9	11.3	* 58,720		24	61.3	42.4	* 47,820		33.5M	36	58.0	56.5		* 23,640	Location	41	60.5	71.3	* 19,080
	23.3	23.6	10.5	* 57,060		27	56.9	40.6	* 40,180		Midpoint	39	54.7	54.5		* 20,980	Location	44	58.0	69.5	* 16,690
24.4M	7.6	77.0	26.2	*217,770	45.7	10.7	79.9	50.5	*130,270	15.2cm	42	51.3	52.2	* 16,720	25.4cm	50	52.7	65.3	* 12,690		
	9	73.7	25.8	*181,130		11	79.5	50.4	*126,340		48	44.0	46.6	* 15,110		Midpoint	53	49.9	62.8	* 11,020	
	11	68.6	25.1	*144,550		12	78.1	50.2	*114,520		51	39.9	43.2	* 13,360		Sag	56	47.0	60.5	* 9,520	
	13	63.4	24.3	*119,060		13	77.1	50.0	*104,660		54	35.5	39.2	* 12,140		42.7M	59	43.9	57.1	* 8,190	
	15	58.0	22.9	* 97,300		14	75.9	49.7	*95,830		57	30.5	34.3	* 10,880		62	40.7	53.8	* 6,970		
	18	49.0	20.6	* 74,220		15	74.7	49.5	*86,260		60	24.5	28.6	* 9,770		68	37.2	50.0	* 5,850		
	21	38.5	17.3	* 58,680		18	71.0	48.5	*70,760		64	16.7	16.3	* 8,440		74	29.2	40.7	* 3,940		
	24	24.4	12.3	* 48,140		21	67.2	47.1	*58,020		67	12.7	12.7	* 7,520		77	24.3	34.6	* 3,100		
	24.4	21.9	11.1	* 46,860		24	63.3	45.9	* 47,770		70	9.7	9.7	* 6,520		79.2	18.2	26.7	* 2,470		
	27.4M	7.6	78.5	29.3		*217,450	48.8M	10.7	79.9		50.5	*130,270	67.1M	11.7		78.7	68.2	* 92,520	82.3M	16.3	78.6
9		75.5	29.0	*181,050	11	79.5		50.4	*126,340	15	78.1	68.1		* 80,670	20	77.4	82.8	* 53,430			
11		71.1	28.3	*142,840	12	78.1		50.2	*114,520	18	75.4	67.3		* 62,970	23	75.3	82.0	* 43,980			
13		66.6	27.5	*117,660	13	77.1		50.0	*104,660	22	72.7	66.4		* 47,270	26	73.1	81.1	* 37,100			
15		61.9	26.5	* 97,300	14	75.9		49.7	*95,830	25	70.0	65.4		* 39,530	29	70.9	80.3	* 31,900			
18		54.4	24.5	* 74,170	15	74.7		49.5	*86,260	28	67.1	64.2		* 33,820	32	70.9	79.0	* 27,740			
21		46.1	21.9	* 58,630	18	71.0		48.5	*70,760	31	64.4	62.8		* 29,230	35	69.5	77.7	* 24,330			
24		36.3	18.3	* 48,090	21	67.2		47.1	*58,020	Location	34	61.6		61.3	* 25,670	38	64.4	76.3		* 21,510	
27		23.1	12.8	* 40,420	24	63.3		45.9	* 47,770	33.5M	37	58.6		59.5	* 22,640	41	61.7	74.8		* 19,030	
27.4		20.6	11.6	* 39,370	30	55.0		42.2	* 34,140	Midpoint	40	55.5		57.1	* 20,130	Location	44	59.1		71.1	* 16,550
30.5M	7.6	79.7	32.5	*217,430	51.8M	10.7	79.9	50.5	*130,270	70.1M	11.7	78.7	71.3	* 92,470	85.3M	16.3	78.6	81.3	* 60,130		
	9	77.0	32.1	*181,010		11	79.5	50.4	*126,340		15	78.1	71.2	* 74,020		20	77.9	85.9	* 53,120		
	11	73.1	31.6	*141,020		12	78.1	50.2	*114,520		18	75.4	69.6	* 57,220		23	75.8	85.2	* 44,000		
	13	69.1	30.8	*115,490		13	77.1	50.0	*104,660		22	73.3	67.7	* 42,220		26	73.7	84.3	* 37,060		
	15	63.0	29.9	* 96,730		14	75.9	49.7	*95,830		25	70.9	66.7	* 39,500		29	71.6	81.4	* 31,860		
	18	58.5	28.2	* 74,130		15	74.7	49.5	*86,260		28	68.3	67.5	* 33,770		32	69.5	82.3	* 27,710		
	21	51.5	26.0	* 58,990		18	71.0	48.5	*70,760		31	65.6	66.2	* 29,290		35	67.3	81.1	* 24,280		
	24	43.7	23.2	* 48,050		21	67.2	47.1	*58,020		Location	34	62.9	64.7		* 25,630	38	64.4	80.3	* 21,490	
	27	34.5	19.3	* 40,380		24	63.3	45.9	* 47,770		33.5M	37	60.1	63.1		* 22,590	41	61.7	77.2	* 18,500	
	30.5	31.5	13.5	* 34,660		30	55.0	42.2	* 34,140		Midpoint	40	57.2	61.2		* 20,070	Location	44	59.1	71.1	* 16,550
33.5M	9.1	77.9	35.2	*177,170	57.9M	10.7	79.9	50.5	*130,270	73.2M	11.7	78.7	74.5	* 92,360	88.4M	16.3	78.6	81.3	* 60,130		
	11	74.7	34.8	*140,860		11	79.5	50.4	*126,340		15	78.1	74.5	* 73,330		20	77.9	85.9	* 53,120		
	13	71.1	34.1	*114,750		12	78.1	50.2	*114,520		18	75.4	70.5	* 57,930		23	75.8	85.2	* 44,000		
	15	67.4	33.3	* 96,060		13	77.1	50.0	*104,660		22	73.3	69.6	* 42,220		26	73.7	84.3	* 37,060		
	18	61.7	31.8	* 74,020		14	75.9	49.7	*95,830		25	70.9	66.7	* 39,500		29	71.6	81.4	* 31,860		
	21	55.6	29.9	* 58,540		15	74.7	49.5	*86,260		28	68.3	67.5	* 33,770		32	69.5	82.3	* 27,710		
	24	49.0	27.5	* 48,000		18	71.0	48.5	*70,760		31	65.6	66.2	* 29,290		35	67.3	81.1	* 24,280		
	27	41.6	24.4	* 40,330		21	67.2	47.1	*58,020		Location	34	62.9	64.7		* 25,630	38	64.4	80.3	* 21,490	
	30	33.0	20.3	* 34,540		24	63.3	45.9	* 47,770		33.5M	37	60.1	63.1		* 22,590	41	61.7	77.2	* 18,500	
	33.5	31.5	14.2	* 29,580		30	55.0	42.2	* 34,140		Midpoint	40	57.2	61.2		* 20,070	Location	44	59.1	71.1	* 16,550
36.6M	9.1	79.0	38.4	*176,450	64.0M	10.7	79.9	50.5	*130,270	76.2M	11.7	78.7	71.3	* 92,470	91.6M	16.3	78.6	81.3	* 60,130		
	11	76.0	37.9	*139,930		11	79.5	50.4	*126,340		15	78.1	71.2	* 74,020		20	77.9	85.9	* 53,120		
	13	72.7	37.3	*113,640		12	78.1	50.2	*114,520		18	75.4	70.5	* 57,930		23	75.8	85.2	* 44,000		
	15	69.4	36.6	* 94,840		13	77.1	50.0	*104,660		22	73.3	69.6	* 42,220		26	73.7	84.3	* 37,060		
	18	64.2	35.1	* 73,860		14	75.9	49.7	*95,830		25	70.9	66.7	* 39,500		29	71.6	81.4	* 31,860		
	21	58.8	33.6	* 58,490		15	74.7	49.5	*86,260		28	68.3	67.5	* 33,770		32	69.5	82.3	* 27,710		
	24	53.1	31.5	* 47,950		18	71.0	48.5	*70,760		31	65.6	66.2	* 29,290		35	67.3	81.1	* 24,280		
	27	46.8	28.8	* 40,290		21	67.2	47.1	*58,020		Location	34	62.9	64.7		* 25,630	38	64.4	80.3	* 21,490	
	30	39.9	25.6	* 34,490		24	63.3	45.9	* 47,770		33.5M	37	60.1	63.1		* 22,590	41	61.7	77.2	* 18,500	
	33	31.6	21.2	* 29,930		30	55.0	42.2	* 34,140		Midpoint	40	57.2	61.2		* 20,070	Location	44	59.1	71.1	* 16,550
39.6M	9.1	79.8	41.5	*175,080	67.1M	10.7	79.9	50.5	*130,270	79.2M	11.7	78.7	74.5	* 92,360	94.8M	16.3	78.6	81.3	* 60,130		
	11	77.1	41.1	*138,220		11	79.5	50.4	*126,340		15	78.1	74.5	* 73,330		20	77.9	85.9	* 53,120		
	13	74.1	40.5	*112,050		12	78.1	50.2	*114,520		18	75.4	70.5	* 57,930		23	75.8	85.2	* 44,000		
	15	71.0	39.9	* 93,240		13	77.1	50.0	*104,660		22	73.3	69.6	* 42,220		26	73.7	84.3	* 37,060		
	18	66.3	38.6	* 73,680		14	75.9	49.7	*95,830		25	70.9	66.7	* 39,500		29	71.6	81.4	* 31,860		
	21	61.5	37.1	* 58,450		15	74.7	49.5	*86,260		28	68.3	67.5	* 33,770		32	69.5	82.3	* 27,710		
	24	56.4	35.2	* 47,910		18	71.0	48.5	*70,760		31	65.6	66.2	* 29,290		35	67.3	81.1	* 24,280		
	27	50.9	32.9	* 40,210		21	67.2	47.1	*58,020</												

BOOM				CAPACITY	CAPACITIES BELOW APPLY TO JIBS - SEE JIB DATA												
L	R	A	H		BOOM PLUS JIB			BOOM PLUS JIB			BOOM PLUS JIB			BOOM PLUS JIB			
					Length	Radius	CAPACITY	Length	Radius	CAPACITY	Length	Radius	CAPACITY	Length	Radius	CAPACITY	
91.4M	18.3	79.8	92.5	* 56,630	303.6M (91.4M + 12.2M)	24.4	* 36,200	27.4	32,700	27.4	* 28,500	115.8M (91.4M + 12.2M)	27.4	* 28,500	121.9M (91.4M + 27.4M)	33.5	* 14,000
	20	78.7	92.1	* 51,520		26	34,900	29	29,900	29	* 26,300		35	* 14,000			
	23	76.8	91.5	43,620		29	30,400	32	25,400	32	26,200		38	* 14,000			
	26	74.8	90.7	37,020		32	25,600	35	21,800	35	22,200		41	* 14,000			
	29	72.9	89.8	31,770		35	22,000	38	18,800	38	19,200		44	* 14,000			
	32	70.9	88.8	27,670		38	19,300	41	16,300	41	16,600		47	13,800			
	35	68.9	87.7	24,190		41	16,600	44	14,300	44	14,400		50	12,600			
	38	66.8	86.4	21,180		44	14,500	47	12,400	47	12,600		53	11,100			
	41	64.8	85.0	18,900		47	12,700	50	10,900	50	11,000		56	9,800			
	Midpoint	44	62.7	83.5		16,530	Midpoint	50	9,300	Location	53		9,500	Location		59	8,600
	Location	47	60.5	81.9		14,360	Location	53	8,300	Location	56		8,300	Location		62	7,600
	48.8M	50	58.3	80.1		12,500	48.8M	56	7,000	48.8M	59		7,200	48.8M		65	6,600
	53	56.1	78.1	* 10,840		56	6,500	59	5,700	59	6,200		62	5,800			
	Midpoint	56	53.8	76.0		9,340	Midpoint	62	5,000	Midpoint	62		6,200	Midpoint		68	5,800
	Sag	59	51.4	73.7		8,010	Sag	65	4,300	Sag	65		5,300	Sag		71	5,000
43.2cm	62	48.9	71.2	6,790	43.2cm	68	3,700	43.2cm	71	4,400	43.2cm	74	4,300				
63	46.4	68.4	5,670	68	4,700	71	3,500	71	3,600	77	3,600						
65	43.7	65.4	4,680	71	3,000	74	2,800	74	2,800	79.2	3,100						
68	40.9	62.0	3,760	74	3,200	76.2	2,300	76.2	2,300								
71	37.9	58.1	2,920	77	2,500												
74	34.9	54.1	2,290	79.2	2,000												
77	31.7	50.2	1,790														
79.2	28.2	46.3	1,360														

94.5M	21.3	78.2	95.0	* 46,630	306.7M (94.5M + 12.2M)	24.4	* 36,200	27.4	32,700	27.4	* 28,500	118.8M (94.5M + 12.2M)	27.4	* 28,500	125.0M (94.5M + 30.5M)	33.5	* 12,200
	23	77.2	94.6	42,770		26	34,900	29	29,800	29	* 26,300		35	* 12,200			
	26	75.3	93.8	36,780		29	30,400	32	25,300	32	26,200		38	* 12,200			
	29	73.4	93.0	31,750		32	25,600	35	21,700	35	22,200		41	* 12,200			
	32	71.5	92.0	27,570		35	22,000	38	18,700	38	19,200		44	* 12,200			
	35	69.6	90.9	24,150		38	19,300	41	16,200	41	16,600		47	13,200			
	38	67.6	89.7	21,130		41	16,600	44	14,200	44	14,400		50	12,000			
	41	65.6	88.4	18,850		44	14,400	47	12,300	47	12,600		53	11,200			
	Midpoint	44	63.6	87.0		16,470	Midpoint	50	10,700	Location	53		10,700	Location		59	9,800
	Location	47	61.6	85.4		14,320	Location	53	9,300	Location	56		9,000	Location		62	8,200
	48.8M	50	59.5	83.7		12,460	48.8M	56	8,000	48.8M	59		7,800	48.8M		65	7,000
	53	57.3	81.8	10,790		56	6,800	59	6,000	59	6,200		62	5,800			
	56	55.1	79.8	9,290		59	7,300	62	5,900	62	6,800		65	6,700			
	Midpoint	59	52.9	77.6		7,970	Midpoint	62	6,300	Midpoint	65		5,900	Midpoint		68	5,900
	Sag	62	50.5	75.2		6,750	Sag	65	5,500	Sag	68		5,100	Sag		71	5,100
43.2cm	65	48.1	72.6	5,630	43.2cm	68	4,700	43.2cm	71	4,300	43.2cm	74	4,400				
68	45.6	69.7	4,630	71	3,900	74	3,400	74	3,500	77	3,500						
71	43.0	66.6	3,730	74	3,100	77	2,800	77	2,800	81	3,000						
74	40.2	63.2	2,870	77	2,400	79.2	2,000	79.2	2,300	83	2,800						
77	37.3	59.4	2,240														
79.2	35.0	56.3	1,860														

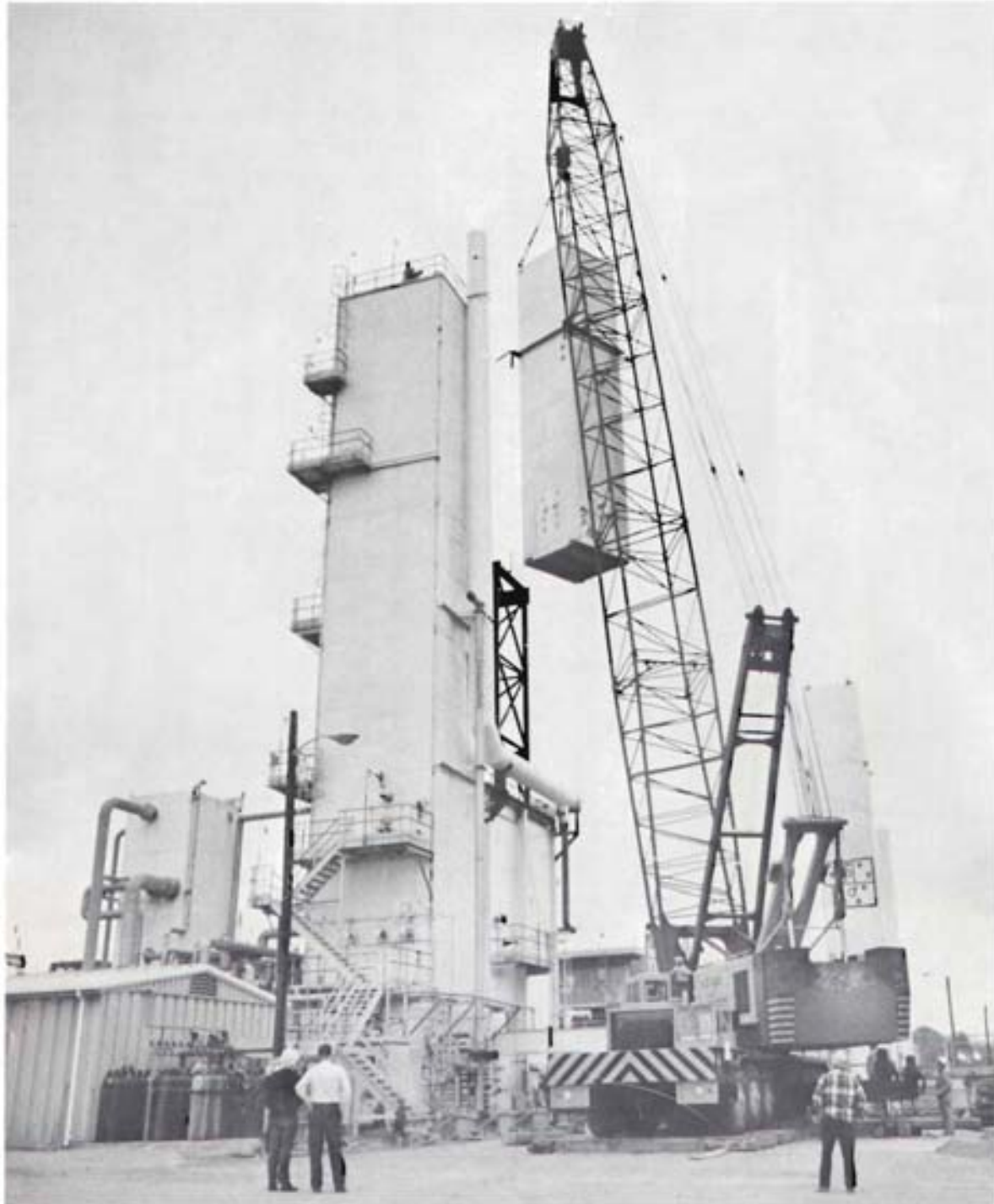
This Chart is Based Upon:

- Capacities marked by * are based upon structural limitations of the machine; all others do not exceed 85% of tipping in the least stable direction.
- When the machine is equipped with standard outriggers and front auxiliary outriggers, full 360° rotation of the crane is permitted. However, when operating the crane in the front sector, the load radius shall not be less than 30.6M. (Refer to diagram below.)
- Machine to be leveled on a firm solid support; shock and side loads are to be prevented.
- When lifting a load, the outriggers must be fully extended horizontally, the outrigger floos down, and all tires free of the ground.
- All hook blocks, lifting tackle and jib attachments are considered a part of the load to be lifted.
- Exceeding these loads or altering the counterweight nullifies all warranties.
- Gantry must be in fully raised position when handling booms or boom plus jib combinations.
- When the machine is equipped with standard outriggers, over the side is the least stable direction.
- Load ratings shown on this chart make no allowance for such factors as the effect of side loads, wind, ground conditions, and operating speeds. The operator therefore shall reduce loads in order to take these factors into account.



Capacities Per S.A.E. Code J-763
 Class Designation Per U.S. Dept. of Commerce Standards

- L = Boom Length (in Meters)
- R = Load Radius from Centerline of Rotation (in Meters)
- H = Height of Boom Point Shaft Above Ground (in Meters)
- A = Boom Angle Above Horizontal (in Degrees)



In accordance with our established policy of constantly improving our products, we reserve the right to change or modify our products or our product specifications at any time without notice.

CLARK Lima
Division

LIMA, OHIO 45802

Manufactured and Sold in Conformance with U.S. Department of Commerce
Commercial Standard C590-58.

DISTRIBUTED BY